

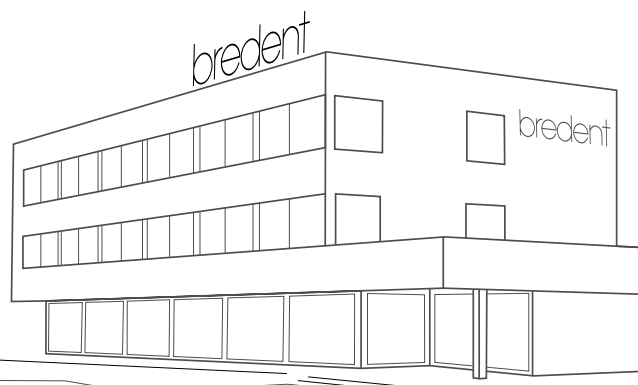
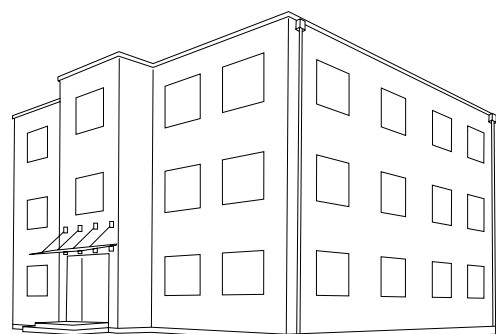
Who we are

The breident group is a family-run and internationally active group of companies that has been offering pioneering complete solutions for dental care of patients since 1974. Our many years of experience and innovative strength make us a safe choice for customers and a role model for the dental market. The corporate group consists of breident, breident medical, Dental Concept Systems and HELBO. They result in an interaction that is optimally coordinated with each other and enables complete system solutions in prosthetic implants. The treatments are manufactured according to the German quality standard. In short,

We are one!

What sets us apart

The breident group shapes its corporate culture according to its defined values as the basis for cooperation among employees, with customers and business partners for long-term relationships and innovative cooperations.



Content

	Page
nomenclature	4
copaSKY	
Implants	8
Prosthetic	10
narrowSKY / blueSKY / SKY classic	
SKY implants	22
Prosthetic	23
whiteSKY	
Implants	38
Prosthetic	39
SKY pro guide – Instruments	40
Surgical and prosthetic Instruments	48
Overview	56
Materials	58

nomenclature

Color code for implant diameter / drills

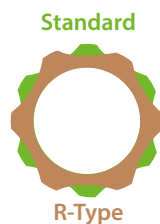
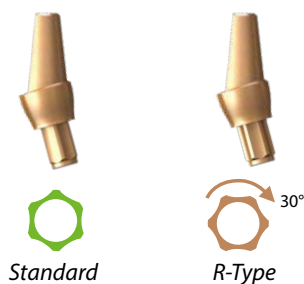


Abutments and copings

The language used at bredent medical is as follows:

- abutment → Inserted directly into the implant (implant level)
- copings → Used on the abutment (abutment level)

Interface with 30° rotation for angled abutments (R variant)



12 positions with angled abutments

- 6 positions Standard
- + 6 positions R-Type

Free STL data for TRY-INS

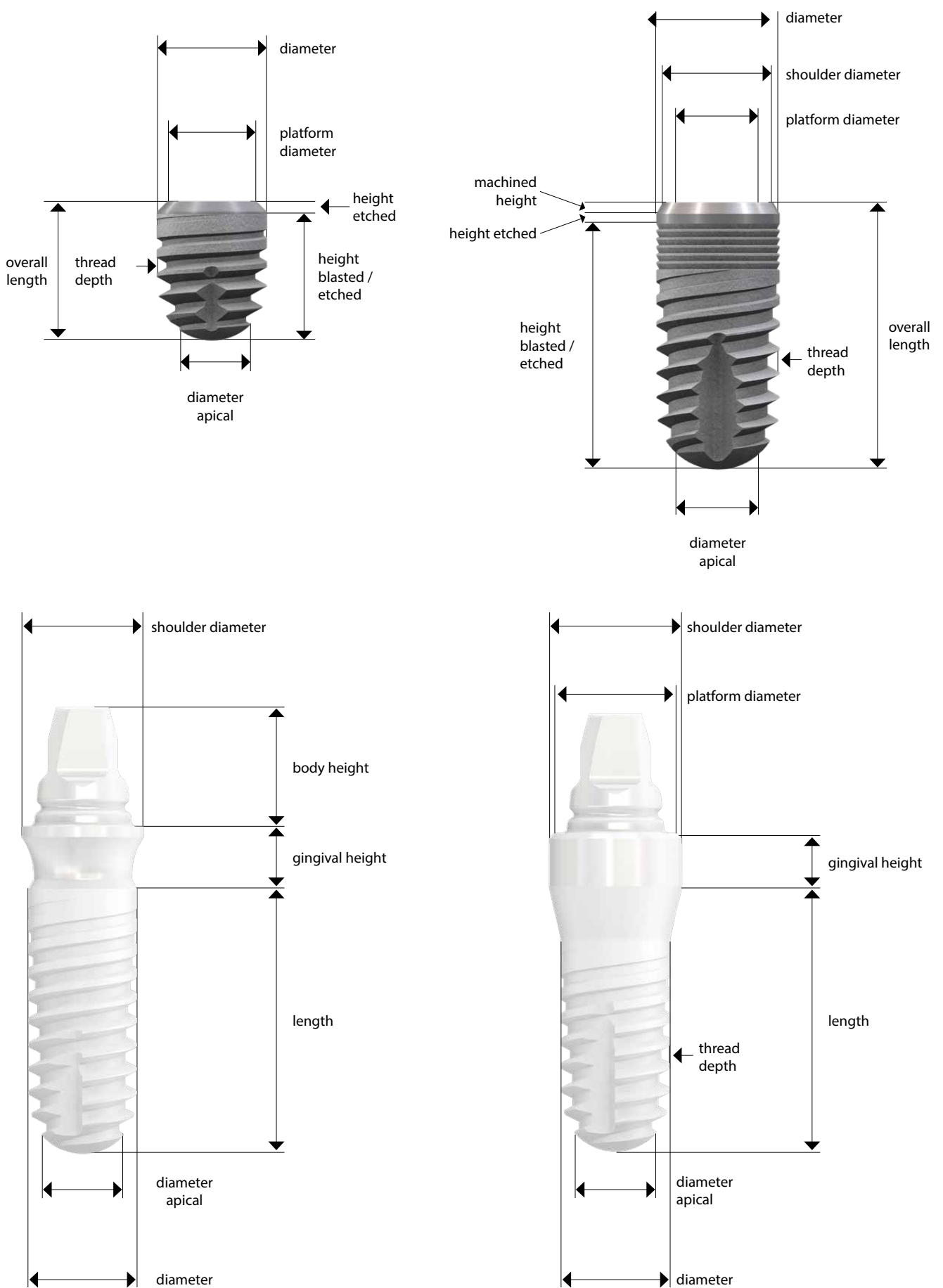


SCAN ME!

STL data is available on our website for the best possible abutment selection on the titanium and uni.cone abutments including the Docklocs® models. This means that the desired variant can be printed as required.

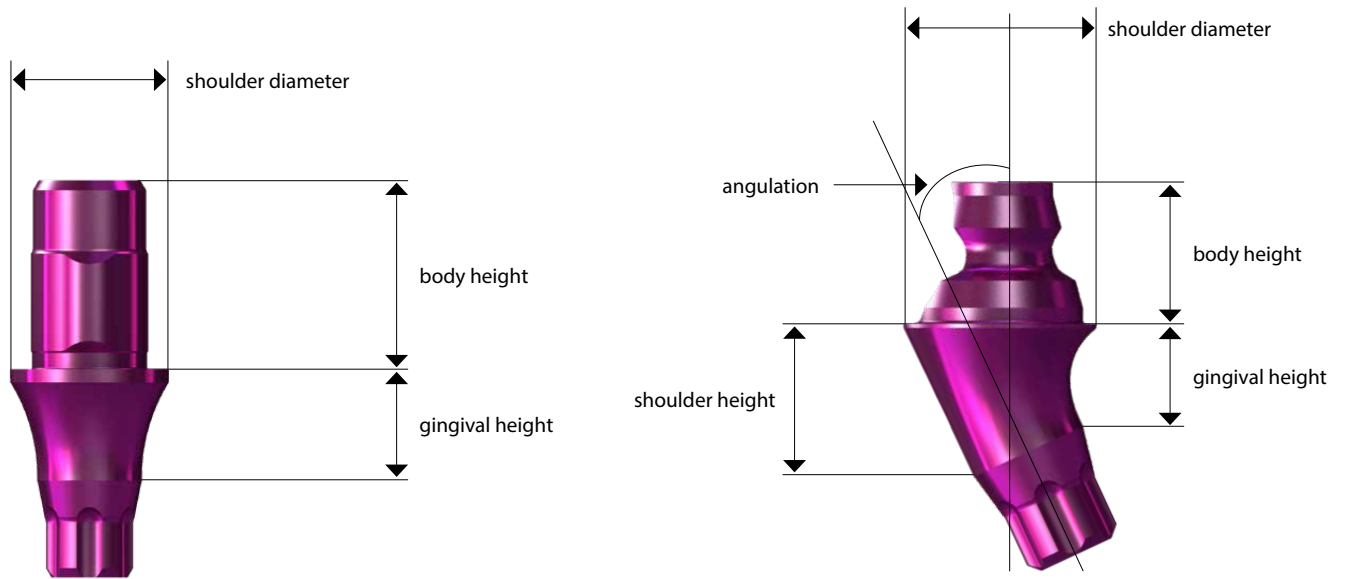


Designations / labelling implants



Technical data

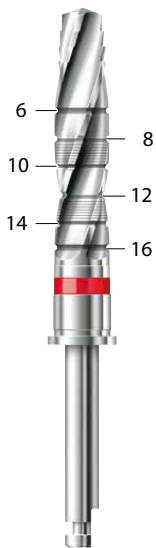
Designations / labelling abutments



Designations / labelling Instrument (drill)

Drill depths

according to the
Implant length in mm



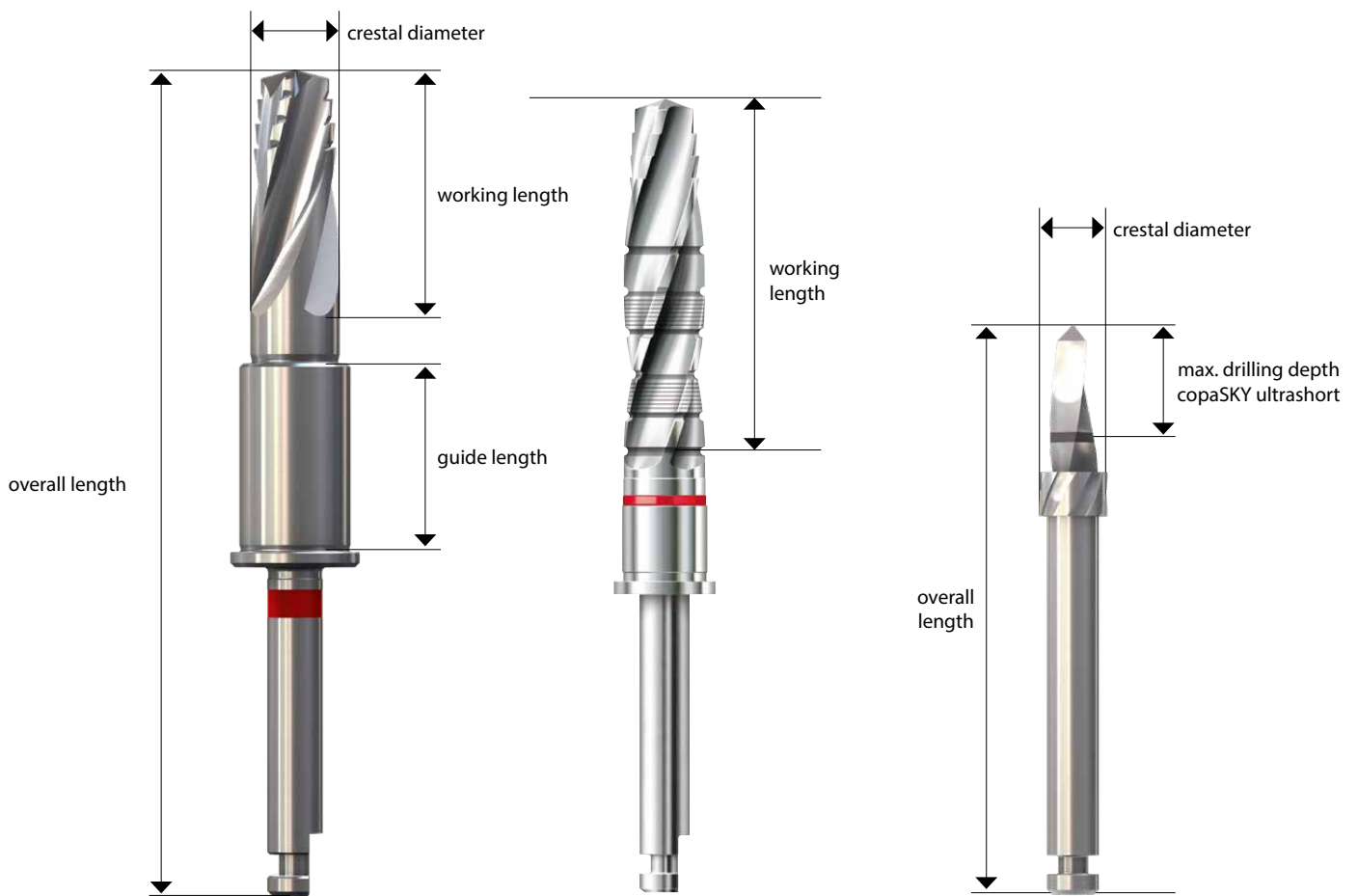
Laser markings

Wide colour stripes:
Use in hard bone
(D1)



Thin colour stripes:
Use in medium and soft bone
(D2-D4)





Recommended indications

Recommendations for use

	implant position	single tooth	Bridges or blocked constructions				removable
			yes	Front	shift gap	free end	
copaSKY	Subcrestal	yes	yes	yes	yes	yes	yes
copaSKY ultrashort	Subcrestal	yes	no extensions	Tooth by tooth blocked or Single crowns	Tooth by tooth blocked or Single crowns	Support- implant	Support in the front and posterior (4 implants)
copa SKY 3.0	Subcrestal	narrow gaps < 6 mm	Tooth by tooth max. 17.5°	mesial bridge pier	no	Support implant in the front max. 17.5°	Support in the front and posterior ultra-short/ angulated <3.5 (4 implants)
narrowSKY	Iso-crestal to slightly subcrestal	yes	yes	yes	yes	yes	yes
blueSKY	Iso-crestal to slightly subcrestal	yes	yes	yes	yes	yes	yes
SKY classic	supra-crestal as Tissue Level Implantat	yes	yes	yes	yes	yes	yes
whiteSKY A. L.	Iso-crestal to slightly subcrestal	yes	yes	yes	yes		
whitesSKY T. L.	Iso-crestal to slightly subcrestal	yes	yes	yes	yes		

Technical data

copaSKY Implants

copaSKY ultrashort



Length		copaSKY	copaSKY	copaSKY	copaSKY
		4.0	4.5	5.0	6.0
	quantity	1	1	1	1
	Cover screw incl.	incl.	incl.	incl.	incl.
	Material	titanium grade 4 KV	titanium grade 4 KV	titanium grade 4 KV	titanium grade 4 KV
5.2 mm	REF	copa4005	copa4505	copa5005	copa6005
	Height etched (mm)	0.4	0.45	0.5	0.6
	Height blasted + etched (mm)	4.8	4.75	4.7	4.6
	Lengths (mm)	5.2	5.2	5.2	5.2
	Diameter(mm)	4.1	4.6	5.2	6
	Platform diameter (mm)	3.3	3.3	3.3	3.3
	Diameter apical (mm)	3.75	4.29	4.89	5.75
	Thread depth max (mm)	0.55	0.55	0.6	0.65
	Thread. self-tapping. single-ended	yes	yes	yes	yes

copaSKY Implants



copaSKY implants

Length		copaSKY	copaSKY	copaSKY	copaSKY	copaSKY	copaSKY
		3.0	3.5	4.0	4.5	5.0	6.0
	quantity	1	1	1	1	1	1
	Cover screw incl.	incl.	incl.	incl.	incl.	incl.	incl.
	Material	titanium grade 4 KV	titanium grade 4 KV	titanium grade 4 KV	titanium grade 4 KV	titanium grade 4 KV	titanium grade 4 KV
8 mm	REF	copa3008	copa3508	copa4008	copa4508	copa5008	copa6008
	Height etched (mm)	0.3	0.3	0.4	0.45	0.5	0.6
	Height blasted + etched (mm)	7.7	7.7	7.6	7.55	7.5	7.4
	Lengths (mm)	8	8	8	8	8	8
	Diameter(mm)	3.1	3.59	4.1	4.6	5.2	6
	Platform diameter (mm)	3	3.3	3.3	3.3	3.3	3.3
	Diameter apical (mm)	2.46	2.77	3.69	3.78	4.46	5.26
	Thread depth max (mm)	0.45	0.45	0.45	0.45	0.45	0.45
	Thread self-tapping two-stage	yes	yes	yes	yes	yes	yes
10 mm	REF	copa3010	copa3510	copa4010	copa4510	copa5010	
	Height etched (mm)	0.3	0.3	0.4	0.45	0.5	
	Height blasted + etched (mm)	9.7	9.7	9.6	9.55	9.5	
	Lengths (mm)	10	10	10	10	10	
	Diameter(mm)	3.1	3.59	4.1	4.6	5.2	
	Platform diameter (mm)	3	3.3	3.3	3.3	3.3	
	Diameter apical (mm)	2.46	2.62	3.69	3.78	4.46	
	Thread depth max (mm)	0.45	0.45	0.45	0.45	0.45	
	Thread self-tapping two-stage	yes	yes	yes	yes	yes	
12 mm	REF	copa3012	copa3512	copa4012	copa4512	copa5012	
	Height etched (mm)	0.3	0.3	0.4	0.45	0.5	
	Height blasted + etched (mm)	11.7	11.7	11.6	11.55	11.5	
	Lengths (mm)	12	12	12	12	12	
	Diameter(mm)	3.1	3.59	4.1	4.6	5.2	
	Platform diameter (mm)	3	3.3	3.3	3.3	3.3	
	Diameter apical (mm)	2.37	2.62	3.48	3.99	4.24	
	Thread depth max (mm)	0.45	0.45	0.45	0.45	0.45	
	Thread self-tapping two-stage	yes	yes	yes	yes	yes	
14 mm	REF	copa3014	copa3514	copa4014	copa4514		
	Height etched (mm)	0.3	0.3	0.4	0.45		
	Height blasted + etched (mm)	13.7	13.7	13.6	13.55		
	Lengths (mm)	14	14	14	14		
	Diameter(mm)	3.1	3.59	4.1	4.6		
	Platform diameter (mm)	3	3.3	3.3	3.3		
	Diameter apical (mm)	2.37	2.62	3.48	3.99		
	Thread depth max (mm)	0.45	0.45	0.45	0.45		
	Thread self-tapping two-stage	yes	yes	yes	yes		

copaSKY – Prosthetic

copaSKY uni.cone abutments



REF	COPAUC01	COPAUC02	COPAUC03	COPAUC04
Name	copaSKY uni.cone abutment height 1 mm 1 Piece	copaSKY uni.cone abutment height 2 mm 1 Piece	copaSKY uni.cone abutment height 3 mm 1 Piece	copaSKY uni.cone abutment height 4 mm 1 Piece
quantity	1	1	1	1
Angulation (°)	0	0	0	0
Gingival Height (mm)	1.7	2.7	3.7	4.7
Body height (mm)	3.3	3.3	3.3	3.3
Shoulder diameter (mm)	4.5	4.5	4.5	4.5
Material	titanium grade 4 KV	titanium grade 4 KV	titanium grade 4 KV	titanium grade 4 KV
titanium anodised	magenta	magenta	magenta	magenta
Torque (Ncm)	30	30	30	30
copaSKY ultrashort	yes	yes	yes	yes
copaSKY 3.0	yes	yes	yes	yes
copaSKY standard	yes	yes	yes	yes
SKY prosthetic key	yes	yes	yes	yes
autoclavable 134°C	yes	yes	yes	yes

copaSKY uni.cone abutments



REF	COPUC172	COPUC173	COPUC252	COPUC253
Name	copaSKY uni.cone abutment 17.5° height 1.5 mm 1 Piece	copaSKY uni.cone abutment 17.5° height 2.5 mm 1 Piece	copaSKY uni.cone abutment 25° height 1.5 mm 1 Piece	copaSKY uni.cone abutment 25° height 2.5 mm 1 Piece
quantity	1	1	1	1
Screw COPASM16	incl.	incl.	incl.	incl.
Insertion aid	incl.	incl.	incl.	incl.
Angulation (°)	17,5	17,5	25	25
Gingival Height (mm)	1,5	2,5	1,5	2,5
Shoulder height (mm)	2,3	3,3	2,95	4,05
Body height (mm)	3,3	3,3	3,3	3,3
Shoulder diameter (mm)	4,5	4,5	4,5	4,5
Material	titanium grade 4 KV	titanium grade 4 KV	titanium grade 4 KV	titanium grade 4 KV
titanium anodised	magenta	magenta	magenta	magenta
Torque (Ncm)	30	30	30	30
copaSKY ultrashort	yes	yes	no	no
copaSKY 3.0	yes	yes	no	no
copaSKY standard	yes	yes	yes	yes
SKY prosthetic key	yes	yes	yes	yes
autoclavable 134°C	yes	yes	yes	yes

copaSKY – Prosthetic

copaSKY uni.cone abutments



REF	COPUC302	COPUC303	COPUC352	COPUC353
Name	copaSKY uni.cone abutment 30° height 1.5 mm 1 Piece	copaSKY uni.cone abutment 30° height 2.5 mm 1 Piece	copaSKY uni.cone abutment 35° height 1.5 mm 1 Piece	copaSKY uni.cone abutment 35° height 2.5 mm 1 Piece
quantity	1	1	1	1
Screw COPASM16	incl.	incl.	incl.	incl.
Insertion aid	incl.	incl.	incl.	incl.
Angulation (°)	30	30	35	35
Gingival Height (mm)	1.5	2.5	1.5	2.5
Shoulder height (mm)	2.9	3.9	3.88	5.1
Body height (mm)	3.3	3.3	3.3	3.3
Shoulder diameter (mm)	4.5	4.5	4.5	4.5
Material	titanium grade 4 KV	titanium grade 4 KV	titanium grade 4 KV	titanium grade 4 KV
titanium anodised	magenta	magenta	magenta	magenta
Torque (Ncm)	30	30	30	30
copaSKY ultrashort	no	no	no	no
copaSKY 3.0	no	no	no	no
copaSKY standard	yes	yes	yes	yes
SKY prosthetic key	yes	yes	yes	yes
autoclavable 134°C	yes	yes	yes	yes

uni.cone accessories for copaSKY and SKY



REF	SKYUCRC1	SKYUCGF2	SKYUSCIE	SKYUCREG	SKYUCSNP	SKYUCAGK	SKYUCAOL
Name	SKY uni.cone gingiva former RevoCone 1 Piece	SKY uni.cone gingiva former 1 Piece	SKY uni.cone scan cap intraoral / extraoral incl. screw 1 Assortment	SKY uni.cone bite registration 10 Pieces	SKY uni.cone Snap cap 10 Pieces	SKY uni.cone impression closed short 1 Piece	SKY uni.cone impression coping open tray 1 set
quantity	1	1	1	10	10	1	1
SKYFFSPK screw			incl.				
Matching screw	incl.	incl.	incl.			incl.	incl.
Angulation (°)	0	0	0	0	0	0	0
Overall height (mm)	5.1	6.1	8	4.1	8	6.1	17.5
Shoulder diameter (mm)	4.5	4.5	4.5	4.5	4.5	4.5	4.5
Material	titanium grade 4 KV	titanium grade 4 KV	PEEK-Classic™	POM	POM	titanium grade 4 KV	titanium grade 4 KV
titanium anodised		red-gold				red-gold	red-gold
Torque (Ncm)	18	10	10			10	10
Note	Torque when used as gingiva former: 10Ncm						
SKY prosthetic key	yes	yes	yes			yes	yes
autoclavable 134°C	yes	yes	yes	no	no	yes	yes
suitable for thermal disinfectant 90°C				yes	yes		

Technical data

copaSKY – Prosthetic

uni.cone accessories for copaSKY and SKY



REF	SKYUCPKT	SKYUCPKC	SKYUCPKK	SKYUCPKS	SKYUCTLA	SKYDUCLA
Name	SKY uni.cone prosthetic coping titanium 1 Piece	SKY uni.cone prosthetics cap CAD/CAM occlusal 1 Piece	SKY uni.cone prosthetic coping burn-out 1 Piece	SKY uni.cone prosthetic coping transversal screw-retained 1 set	SKY uni.cone laboratory analogue incl. laboratory screw 1 Piece	SKY uni.cone laboratory analogue 3D Print 1 Piece
quantity	1	1	1	1	1	1
SKYFFSPK screw	incl.	incl.	incl.			
SKYFFLPK screw					incl.	incl.
SKYUFTS9 screw				incl.		
Fastening screw						incl.
Modelling cap				incl.		
Silicone tube	incl.					
Locking pins	incl.					
Angulation (°)	0	0	0	0	0	0
Overall height (mm)	12.4	12.4	12.4	5.1	17.3	13.8
Shoulder diameter (mm)	4.5	4.5	4.5	4.5	4.5	4.5
Material	titanium grade 4 KV	titanium grade 4 KV	PMMA	titanium grade 4 KV	titanium grade 4 KV	titanium grade 4 KV
titanium anodised	red-gold	red-gold		red-gold	red-gold	
Prosthetic coping material				PMMA		
Torque (Ncm)	18	18	18	18	10	10
suitable for Allen 0.9				yes		
SKY prosthetic key	yes	yes	yes	yes		
autoclavable 134°C	yes	no	no	yes		
Note				coping not sterilisable		

BioHPP copaSKY elegance



REF	COPAES00	COPAES15	COPAEM00	COPAEM15
Name	BioHPP copaSKY elegance S abutment 0° 1 Piece	BioHPP copaSKY elegance S abutment 15° 1 Piece	BioHPP copaSKY elegance abutment 0° height 4 mm 1 piece	BioHPP copaSKY elegance abutment 15° height 4 mm 1 piece
quantity	1	1	1	1
Screw COPASM16	incl.	incl.	incl.	incl.
Angulation (°)	0	15	0	15
Gingival Height (mm)	4.5	4.5	4	4
Body height (mm)	6	6	6	6
Shoulder diameter (mm)	4.5	4.5	5.5	5.5
Body Material	BioHPP	BioHPP	BioHPP	BioHPP
Base material	titanium grade 4 KV	titanium grade 4 KV	titanium grade 4 KV	titanium grade 4 KV
titanium anodised	magenta	magenta	magenta	magenta
Torque (Ncm)	30	30	30	30
copaSKY ultrashort	yes	yes	yes	yes
copaSKY 3.0	yes	yes	yes	yes
copaSKY standard	yes	yes	yes	yes
SKY prosthetic key	yes	yes	yes	yes
autoclavable 134°C	yes	yes	yes	yes

copaSKY titanium base



REF	COPAETBM
Name	copaSKY elegance titanium base 0° 1 piece
quantity	1
Screw COPASM16	incl.
Angulation (°)	0
Gingival Height (mm)	1.5
Shoulder diameter (mm)	3.6
Material	titanium grade 4 KV
titanium anodised	magenta
Torque (Ncm)	30
copaSKY ultrashort	yes
copaSKY 3.0	yes
copaSKY standard	yes
SKY prosthetic key	yes
autoclavable 134°C	yes

copaSKY – Prosthetic

copaSKY Scan abutment



REF	COPASC12
Name	copaSKY scan abutment 12 1 Piece
quantity	1
Screw COPASM16	incl.
Angulation (°)	0
Body height (mm)	11.5
Diameter(mm)	4.5
Material	titanium grade 4 KV
Torque (Ncm)	10
Note	surface optimized for scanning
copaSKY ultrashort	yes
copaSKY 3.0	yes
copaSKY standard	yes
SKY prosthetic key	yes
autoclavable 134°C	yes

copaSKY prefabs



REF	COPPFTST	COPEPMST
Name	copaSKY prefab titanium set 1 set	BioHPP copaSKY elegance prefab set CSK set 1 piece
quantity	1	1
Screw COPASM16	incl.	incl.
Angulation (°)	0	0
Body height (mm)	20	16
Diameter(mm)	11.5	12
Shoulder diameter (mm)		3.6
Material	titanium grade 4 KV	
Body Material		BioHPP
Base material		titanium grade 4 KV
titanium anodised		magenta
Torque (Ncm)	30	30
Note	gingiva height min. 1 mm	gingiva height min. 1.5 mm
copaSKY ultrashort	yes	yes
copaSKY 3.0	yes	yes
copaSKY standard	yes	yes
SKY prosthetic key	yes	yes
Connection	Medentika	Sirona® Standard
autoclavable 134°C	yes	yes

copaSKY uni.fit titanium base



REF	COPAUTB0	COPAUTB2	COPAUTB3	COPAUTL2	COPAUTL3
Name	copaSKY uni.fit titanium base height 0 mm 1 Piece	copaSKY uni.fit titanium base height 1.5 mm 1 piece	copaSKY uni.fit titanium base height 3 mm 1 piece	copaSKY uni.fit titanium base L height 1.5 mm 1 Piece	copaSKY uni.fit titanium base L height 3 mm 1 Piece
quantity	1	1	1	1	1
Screw COPASM16	incl.	incl.	incl.	incl.	incl.
Angulation (°)	0	0	0	0	0
Gingival Height (mm)	0.4	1.5	3	1.5	3
Body height (mm)	5	5	5	5	5
Shoulder diameter (mm)	4.2	4.2	4.2	5.5	5.5
Material	titanium grade 4 KV	titanium grade 4 KV	titanium grade 4 KV	titanium grade 4 KV	titanium grade 4 KV
titanium anodised	magenta	magenta	magenta	magenta	magenta
Torque (Ncm)	30	30	30	30	30
copaSKY ultrashort	yes	yes	yes	yes	yes
copaSKY 3.0	no	yes	yes	no	no
copaSKY standard	yes	yes	yes	yes	yes
SKY prosthetic key	yes	yes	yes	yes	yes
autoclavable 134°C	yes	yes	yes	yes	yes

copaSKY – Prosthetic

copaSKY bridge abutments



REF	COPABRS2	COPABRS3	COPUTBB0	COPUTBB1	COPUTBB2	COPUTBB3
Name	copaSKY bridge and bar abutment height 2.7mm 1 piece	copaSKY bridge and bar abutment height 3.7mm 1 piece	copaSKY uni.fit bridge height 0 mm 1 Piece	copaSKY uni.fit bridge height 1.7 mm 1 Piece	copaSKY uni.fit bridge height 2.7 mm 1 Piece	copaSKY uni.fit bridge height 3.7 mm 1 Piece
quantity	1	1	1	1	1	1
Screw COPASM16	incl.	incl.	incl.	incl.	incl.	incl.
Angulation (°)	0	0	0	0	0	0
Gingival Height (mm)	2.7	3.7	0.4	1.7	2.7	3.7
Body height (mm)	4	4	5	5	5	5
Shoulder diameter (mm)	4.5	4.5	4.7	4.7	4.7	4.7
Material	titanium grade 4 KV	titanium grade 4 KV	titanium grade 4 KV	titanium grade 4 KV	titanium grade 4 KV	titanium grade 4 KV
titanium anodised	magenta	magenta	magenta	magenta	magenta	magenta
Torque (Ncm)	30	30	30	30	30	30
copaSKY ultrashort	yes	yes	yes	yes	yes	yes
copaSKY 3.0	yes	yes	no	yes	yes	yes
copaSKY standard	yes	yes	yes	yes	yes	yes
SKY prosthetic key	yes	yes	yes	yes	yes	yes
autoclavable 134°C	yes	yes	yes	yes	yes	yes

copaSKY Ti-base flex



REF	COPTBF20	COPTBF30	COPTBF2B	COPTBF3B
Name	copaSKY Ti-base flex height 1.5 mm 1 piece	copaSKY Ti-base flex height 3 mm 1 piece	copaSKY Ti-base flex bridge height 1.5 mm 1 piece	copaSKY Ti-base flex bridge height 3 mm 1 piece
quantity	1	1	1	1
Screw COPASM16	incl.	incl.	incl.	incl.
Angulation (°)	0	0	0	0
Gingival Height (mm)	1.5	3	1.5	3
Body height (mm)	10	10	10	10
Shoulder diameter (mm)	4.5	4.5	4.5	4.5
Material	titanium grade 4 KV	titanium grade 4 KV	titanium grade 4 KV	titanium grade 4 KV
titanium anodised	magenta	magenta	magenta	magenta
Torque (Ncm)	30	30	30	30
Indication limited to	only approved as a temporary abutment for copaSKY 3.0 single tooth	only approved as a temporary abutment for copaSKY 3.0 single tooth	only approved as a temporary abutment for copaSKY 3.0 single tooth	only approved as a temporary abutment for copaSKY 3.0 single tooth
Note	Torque when used as gingiva former: 10Ncm	Torque when used as gingiva former: 10Ncm	Torque when used as gingiva former: 10Ncm	Torque when used as gingiva former: 10Ncm
copaSKY ultrashort	yes	yes	yes	yes
copaSKY 3.0	yes	yes	yes	yes
copaSKY standard	yes	yes	yes	yes
SKY prosthetic key	yes	yes	yes	yes
autoclavable 134°C	yes	yes	yes	yes

copaSKY – Prosthetic

copaSKY uni.fit titanium bases for CEREC®



REF	COPCTBS2	COPCTBS3	COPCTBL2	COPCTBL3
Name	copaSKY titanium base S for CEREC® height 1.5 mm 1 Piece	copaSKY titanium base S for CEREC® height 3 mm 1 Piece	copaSKY titanium base L for CEREC® height 1.5 mm 1 piece	copaSKY titanium base L for CEREC® height 3 mm 1 piece
quantity	1	1	1	1
Screw COPASM16	incl.	incl.	incl.	incl.
Angulation (°)	0	0	0	0
Gingival Height (mm)	1.5	3	1.5	3
Body height (mm)	4.7	4.7	4.68	4.68
Shoulder diameter (mm)	4.2	4.2	4.8	4.8
Material	titanium grade 4 KV	titanium grade 4 KV	titanium grade 4 KV	titanium grade 4 KV
titanium anodised	magenta	magenta	magenta	magenta
Torque (Ncm)	30	30	30	30
copaSKY ultrashort	yes	yes	yes	yes
copaSKY 3.0	yes	yes	no	no
copaSKY standard	yes	yes	yes	yes
SKY prosthetic key	yes	yes	yes	yes
Connection	CEREC®	CEREC®	CEREC®	CEREC®
autoclavable 134°C	yes	yes	yes	yes

copaSKY gingiva former



REF	COPAGF22	COPAGF34	COPAGF36	COPAGF66	COPAGF88
Name	copaSKY gingiva former height 2 mm 1 piece	copaSKY gingiva former height 4 mm 1 piece	copaSKY gingiva former height 6 mm 1 piece	copaSKY gingiva former height 6 mm scalloped 1 Piece	copaSKY gingiva former height 8 mm scalloped 1 Piece
quantity	1	1	1	1	1
Angulation (°)	0	0	0	0	0
Gingival Height (mm)	2	4	6	6	8
Shoulder diameter (mm)	4.8	4.8	4.8	4.8	4.8
Material	titanium grade 4 KV	titanium grade 4 KV	titanium grade 4 KV	titanium grade 4 KV	titanium grade 4 KV
titanium anodised	magenta	magenta	magenta	magenta	magenta
Torque (Ncm)	10	10	10	10	10
copaSKY ultrashort	yes	yes	yes	yes	yes
copaSKY 3.0	yes	yes	yes	yes	yes
copaSKY standard	yes	yes	yes	yes	yes
SKY prosthetic key	yes	yes	yes	yes	yes
autoclavable 134°C	yes	yes	yes	yes	yes

Technical data

copaSKY – Prosthetic

copaSKY gingiva former



REF	COPAGFL4	COPAGFL6	COPAGFL8	COPAGFN6
Name	copaSKY gingiva former L height 4 mm 1 Piece	copaSKY gingiva former L height 6 mm 1 Piece	copaSKY gingiva former L height 8 mm 1 Piece	copaSKY gingiva former height 6 mm needle 1 Piece
quantity	1	1	1	1
Angulation (°)	0	0	0	0
Gingival Height (mm)	4	6	8	6
Shoulder diameter (mm)	6.5	6.5	6.5	2.3
Material	titanium grade 4 KV	titanium grade 4 KV	titanium grade 4 KV	titanium grade 4 KV
titanium anodised	magenta	magenta	magenta	magenta
Torque (Ncm)	10	10	10	10
copaSKY ultrashort	yes	yes	yes	yes
copaSKY 3.0	no	no	no	yes
copaSKY standard	yes	yes	yes	yes
SKY prosthetic key	yes	yes	yes	yes
autoclavable 134°C	yes	yes	yes	yes

copaSKY impression taking



REF	COPAPA22	COPAPA32	COPAGL21	COPAGL31
Name	copaSKY impression abutment open tray height 2 mm 1 piece	copaSKY impression abutment open tray height 3 mm 1 piece	copaSKY impression abutment closed tray height 2 mm 1 piece	copaSKY impression abutment closed tray height 3 mm 1 piece
quantity	1	1	1	1
Matching screw	incl.	incl.	incl.	incl.
Angulation (°)	0	0	0	0
Gingival Height (mm)	3.6	3	3	3
Body height (mm)	7.52	8.12	8	8
Height incl. screw (mm)	18.8	18.8		
Shoulder diameter (mm)	4.8	4.8	4.8	4.8
Material	titanium grade 4 KV	titanium grade 4 KV	titanium grade 4 KV	titanium grade 4 KV
titanium anodised	magenta	magenta	magenta	magenta
Torque (Ncm)	10	10	10	10
copaSKY ultrashort	yes	yes	yes	yes
copaSKY 3.0	yes	yes	yes	yes
copaSKY standard	yes	yes	yes	yes
SKYnPAKA			yes	yes
SKY prosthetic key	yes	yes	yes	yes
autoclavable 134°C	yes	yes	yes	yes

copaSKY – Prosthetic

copaSKY implant analogues



REF	COPAIA50	copdIA50
Name	copaSKY implant analogue 1 piece	copaSKY implant analogue 3D Print 1 Piece
quantity	1	1
Screw COPALM16	incl.	incl.
Fastening screw		incl.
Angulation (°)	0	0
Height (mm/in)	14	8.5
Shoulder diameter (mm)	3.3	3.3
Material	titanium grade 4 KV	titanium grade 4 KV
titanium anodised	magenta	magenta
Torque (Ncm)	10	10
SKY prosthetic key	yes	yes

EXSO accessories



REF	SKYdEXLA	SKYnPAKA
Name	SKY EXSO lab analog 1 piece	SKY closed tray impression cap NP 10 pieces
quantity	1	10
SKYLP522 screw	incl.	
Fastening screw	incl.	
Height (mm/in)	10	
Body height (mm)	5.55	
Overall height (mm)	15.55	4.5
Shoulder diameter (mm)	4.8	
Material	titanium grade 4 KV	POM
Torque (Ncm)	10	
SKYnPAKA	yes	
SKY prosthetic key	yes	
autoclavable 134°C		no
suitable for thermal disinfectant 90°C		yes

copaSKY EXSO



REF	COPEX002	COPEX003	COPEX172	COPEX173	COPEX352	COPEX353
Name	copaSKY EXSO abutment 0° height 1.5 mm 1 piece	copaSKY EXSO abutment 0° height 3 mm 1 piece	copaSKY EXSO abutment 17.5° height 1 mm 1 piece	copaSKY EXSO abutment 17.5° height 2 mm 1 piece	copaSKY EXSO abutment 35° height 1 mm 1 piece	copaSKY EXSO abutment 35° height 2 mm 1 piece
quantity	1	1	1	1	1	1
Screw COPASM16	incl.	incl.	incl.	incl.	incl.	incl.
Angulation (°)	0	0	17.5	17.5	35	35
Gingival Height (mm)	1.5	3	1	2	1	2
Shoulder height (mm)			2.24	3.17	3.51	4.6
Body height (mm)	5.55	5.55	5.55	5.55	5.55	5.55
Shoulder diameter (mm)	4.8	4.8	4.8	4.8	4.8	4.8
Material	titanium grade 4 KV	titanium grade 4 KV	titanium grade 4 KV	titanium grade 4 KV	titanium grade 4 KV	titanium grade 4 KV
titanium anodised	magenta	magenta	magenta	magenta	magenta	magenta
Torque (Ncm)	30	30	30	30	30	30
copaSKY ultrashort	yes	yes	yes	yes	no	no
copaSKY 3.0	yes	yes	yes	yes	no	no
copaSKY standard	yes	yes	yes	yes	yes	yes
SKYnPAKA	yes	yes	yes	yes	yes	yes
SKY prosthetic key	yes	yes	yes	yes	yes	yes
autoclavable 134°C	yes	yes	yes	yes	yes	yes

Technical data

copaSKY – Prosthetic

copaSKY titanium abutments



REF	COPAPF00	COPAPF15	COPAPF16	COPAPF25	COPAPF26
Name	copaSKY titanium abutment 0° height 1.5mm 1 Piece	copaSKY titanium abutment 15° height 1.5mm 1 Piece	copaSKY titanium abutment 15° R height 1.5mm 1 Piece	copaSKY titanium abutment 25° height 1.5mm 1 Piece	copaSKY titanium abutment 25° R height 1.5mm 1 Piece
quantity	1	1	1	1	1
Screw COPASM16	incl.	incl.	incl.	incl.	incl.
Angulation (°)	0	15	15	25	25
Gingival Height (mm)	1.5	1.5	1.5	1.5	1.5
Body height (mm)	7	7.7	7.7	7.6	7.6
Shoulder diameter (mm)	4.2	4.4	4.4	4.7	4.7
Interface Orientation			R = rotated by 30°		R = rotated by 30°
Material	titanium grade 4 KV	titanium grade 4 KV	titanium grade 4 KV	titanium grade 4 KV	titanium grade 4 KV
titanium anodised	magenta	magenta	magenta	magenta	magenta
Torque (Ncm)	30	30	30	30	30
copaSKY ultrashort	yes	yes	yes	no	no
copaSKY 3.0	yes	yes	yes	no	no
copaSKY standard	yes	yes	yes	yes	yes
SKY prosthetic key	yes	yes	yes	yes	yes
autoclavable 134°C	yes	yes	yes	yes	yes

copaSKY titanium abutments



REF	COPAPO00	COPAPO15	COPAPO16	COPAPO25	COPAPO26
Name	copaSKY titanium abutment 0° height 3 mm 1 Piece	copaSKY titanium abutment 15° height 3 mm 1 Piece	copaSKY titanium abutment 15° R height 3 mm 1 Piece	copaSKY titanium abutment 25° height 3 mm 1 Piece	copaSKY titanium abutment 25° R height 3 mm 1 Piece
quantity	1	1	1	1	1
Screw COPASM16	incl.	incl.	incl.	incl.	incl.
Angulation (°)	0	15	15	25	25
Gingival Height (mm)	3	3	3	3	3
Body height (mm)	7	7.45	7.45	7.45	7.45
Shoulder diameter (mm)	4.2	4.35	4.35	4.7	4.7
Interface Orientation			R = rotated by 30°		R = rotated by 30°
Material	titanium grade 4 KV	titanium grade 4 KV	titanium grade 4 KV	titanium grade 4 KV	titanium grade 4 KV
titanium anodised	magenta	magenta	magenta	magenta	magenta
Torque (Ncm)	30	30	30	30	30
copaSKY ultrashort	yes	yes	yes	no	no
copaSKY 3.0	yes	yes	yes	no	no
copaSKY standard	yes	yes	yes	yes	yes
SKY prosthetic key	yes	yes	yes	yes	yes
autoclavable 134°C	yes	yes	yes	yes	yes

copaSKY – Prosthetic



copaSKY TiSi.snap

REF	COPTISI2	COPTISI3	COPTISI7	COPTISI8
Name	copaSKY TiSi.snap abutment height 1.5 mm 1 piece	copaSKY TiSi.snap abutment height 3 mm 1 piece	copaSKY TiSi.snap abutment 17.5° height 1.5 mm 1 Piece	copaSKY TiSi.snap abutment 17.5° height 3 mm 1 Piece
quantity	1	1	1	1
Screw COPASM16			incl.	incl.
Angulation (°)	0	0	17.5	17.5
Gingival Height (mm)	1.5	3	1.5	3
Shoulder height (mm)			2.3	3.8
Body height (mm)	3.31	3.31	2.7	2.7
Shoulder diameter (mm)	4.5	4.5	4.5	4.5
Material	titanium grade 4 KV	titanium grade 4 KV	titanium grade 4 KV	titanium grade 4 KV
titanium anodised	magenta	magenta	magenta	magenta
Torque (Ncm)	30	30	30	30
Retention area diameter (mm)	3.8	3.8	3.8	3.8
copaSKY ultrashort	yes	yes	yes	yes
copaSKY 3.0	yes	yes	yes	yes
copaSKY standard	yes	yes	yes	yes
suitable for retention.sil	yes	yes	yes	yes
Retention elements 0°-10°	no	no	no	no
Retention elements 10°-20°	yes	yes	yes	yes
SKY prosthetic key	yes	yes	yes	yes
autoclavable 134°C	yes	yes	yes	yes



copaSKY Docklocs®

REF	COPDL010	COPDL020	COPDL030	COPDL040	COPDL060
Name	Docklocs® copaSKY Abutment 0° h 1.0 mm 1 piece	Docklocs® copaSKY Abutment 0° h 2.0 mm 1 piece	Docklocs® copaSKY Abutment 0° h 3.0 mm 1 piece	Docklocs® copaSKY Abutment 0° h 4.0 mm 1 piece	Docklocs® copaSKY Abutment 0° h 6.0 mm 1 piece
quantity	1	1	1	1	1
Angulation (°)	0	0	0	0	0
Gingival Height (mm)	1	2	3	4	6
Material	titanium grade 5	titanium grade 5	titanium grade 5	titanium grade 5	titanium grade 5
Coating layer	ZrCN	ZrCN	ZrCN	ZrCN	ZrCN
Torque (Ncm)	30	30	30	30	30
copaSKY ultrashort	yes	yes	yes	no	no
copaSKY 3.0	yes	yes	yes	no	no
copaSKY standard	yes	yes	yes	yes	yes
Retention elements 0°-10°	yes	yes	yes	yes	yes
Retention elements 10°-20°	yes	yes	yes	yes	yes
Docklocs® Instruments	yes	yes	yes	yes	yes
SKY prosthetic key	yes	yes	yes	yes	yes
autoclavable 134°C	yes	yes	yes	yes	yes

Technical data

copaSKY – Prosthetic



copaSKY Docklocs®

REF	COPDL182	COPDL184	COPDL185
Name	Docklocs® copaSKY Abutment 18° h 2.0 mm 1 piece	Docklocs® copaSKY Abutment 18° h 4.0 mm 1 piece	Docklocs® copaSKY Abutment 18° h 5.0 mm 1 piece
quantity	1	1	1
Docklocs® screw (copaSKY)	incl.	incl.	incl.
Angulation (°)	18	18	18
Gingival Height (mm)	2	4	5
Material	titanium grade 5	titanium grade 5	titanium grade 5
Coating layer	ZrCN	ZrCN	ZrCN
Torque (Ncm)	30	30	30
copaSKY ultrashort	no	no	no
copaSKY 3.0	yes	yes	no
copaSKY standard	yes	yes	yes
Retention elements 0°-10°	no	no	no
Retention elements 10°-20°	yes	yes	yes
Docklocs® Instruments	no	no	no
SKY prosthetic key	yes	yes	yes
autoclavable 134°C	yes	yes	yes



Docklocs® accessories

REF	SKYDLIC4	SKYDLLA4	SKYDLEDC
Name	Docklocs® Impression Coping (4 Pack)	Docklocs® Abutment Lab Analog (4mm Diameter) (4 Pack)	Docklocs® Enhanced Denture Cap Assembly red (4 Pack)
quantity	4	4	4
Overall height (mm)	5.3	10.5	
Material	titanium grade 5 and PE	titanium grade 5	titanium grade 5 and PE
autoclavable 134°C			
suitable for thermal disinfector 90°C			

Docklocs® working inserts



REF	SKYDLBPI
Name	Docklocs® Processing Insert (Black) (4 Pack)
quantity	4
Material	PE
Colour	black
autoclavable 134°C	no
suitable for thermal disinfector 90°C	no
Can be reused	no

copaSKY – Prosthetic

Docklocs® retention inserts 0-10°



REF	SKYDLBLU	SKYDLPIN	SKYDLCLR
Name	Docklocs® HPP Low Retention Replacement Inserts (Blue) (8 Pack)	Docklocs® HPP Medium Retention Replacement Inserts (Pink) (8 Pack)	Docklocs® HPP High Retention Replacement Inserts (Clear) (8 Pack)
quantity	8	8	8
Material	HPP	HPP	HPP
Pull-off force (N)	7	12	22
Colour	blue	pink	clear
autoclavable 134°C	yes	yes	yes
Can be reused	no	no	no

Docklocs® instruments

→ page 55

Docklocs® retention inserts 10-20°



REF	SKYDLRED	SKYDLOGE	SKYDLGRN	SKYDLGRY
Name	Docklocs® HPP Extended Pivot Low Retention Replacement Inserts (Red) (8 Pack)	Docklocs® HPP Extended Pivot Medium Retention Replacement Inserts (Orange) (8 Pack)	Docklocs® HPP Extended Pivot High Retention Replacement Inserts (Green) (8 Pack)	Docklocs® HPP Extended Pivot Zero Retention Replacement Inserts (Gray) (8 Pack)
quantity	8	8	8	8
Material	HPP	HPP	HPP	HPP
Pull-off force (N)	6	10	19	
Colour	red	orange	green	grey
autoclavable 134°C	yes	yes	yes	yes
Can be reused	no	no	no	no

copaSKY screws



REF	COPASM16	COPALM16	SKYVPS10	SKYFFSPK	SKYFFLPK	SKYUFTS9	
Name	copaSKY abutment screw M1.6 6 pieces	copaSKY laboratory screw M1.6 10 pieces	SKY locking pin screw channel 10 pieces	SKY fast & fixed / uni.cone screw M 1.4 for prosthetic coping 6 Pieces	SKY fast & fixed / uni.cone laboratory screw M 1.4 grey 10 Pieces	SKY fast & fixed / uni.cone transversal screw Hex 0.9 6 Pieces	copaSKY cover screw
quantity	6	10	10	6	10	6	
Lengths (mm)	6.4	6.4	14	5.3	5.3	2.5	4.55
Material	titanium grade 5	titanium grade 5	POM	titanium grade 5	titanium grade 5	titanium grade 5	titanium grade 4 KV
titanium anodised	magenta			blue			magenta
Thread	M 1.6	M 1.6		M 1.4	M 1.4	M 2x0.25	M 1.6
Head diameter (mm)	2.2	2.2		2.05	2.2		2.9
suitable for Allen 0.9						yes	
SKY prosthetic key	yes	yes		yes	yes	no	yes
autoclavable 134°C	yes	yes		yes	yes	yes	yes

Technical data

SKY Implants



SKY implants

Length	narrowSKY	blueSKY	blueSKY	blueSKY	SKY classic	SKY classic	SKY classic
	3.5 N	4.0	4.5	5.5	3.5	4.0	4.5
quantity	1	1	1	1	1	1	1
Cover screw incl.	incl.	incl.	incl.	incl.	incl.	incl.	incl.
Material	titanium grade 4 KV	titanium grade 4 KV	titanium grade 4 KV	titanium grade 4 KV	titanium grade 4 KV	titanium grade 4 KV	titanium grade 4 KV
8 mm REF	nSKY3508	bSKY4008	bSKY4508	bSKY5508		kSKY4008	kSKY4508
Height etched (mm)	0.3	0.3	0.3	0.37		0.5	0.5
Height blasted + etched (mm)	7.2	7.2	7.2	7.2		6	6
Machined height (mm)	0.5	0.5	0.5	0.43		1.5	1.5
Lengths (mm)	8	8	8	8		8	8
Diameter(mm)	3.6	4.1	4.6	5.2		4.1	4.6
Platform diameter (mm)	3.6	4.1	4.1	4.7		4.1	4.1
Diameter apical (mm)	2.83	3.45	4.37	5.09		3.45	4.37
Thread depth max (mm)	0.45	0.45	0.45	0.45		0.45	0.45
Thread self-tapping two-stage	yes	yes	yes	yes		yes	yes
10 mm REF	nSKY3510	bSKY4010	bSKY4510	bSKY5510	kSKY3510	kSKY4010	kSKY4510
Height etched (mm)	0.3	0.3	0.3	0.37	0.95	0.5	0.5
Height blasted + etched (mm)	9.2	9.2	9.2	9.2	8	8	8
Machined height (mm)	0.5	0.5	0.5	0.43	1.05	1.5	1.5
Lengths (mm)	10	10	10	10	10	10	10
Diameter(mm)	3.6	4.1	4.6	5.2	3.6	4.1	4.6
Platform diameter (mm)	3.6	4.1	4.1	4.7	4.1	4.1	4.1
Diameter apical (mm)	2.66	3.45	4.37	5.09	2.73	3.45	4.37
Thread depth max (mm)	0.45	0.45	0.45	0.45	0.45	0.45	0.45
Thread self-tapping two-stage	yes	yes	yes	yes	yes	yes	yes
12 mm REF	nSKY3512	bSKY4012	bSKY4512	bSKY5512	kSKY3512	kSKY4012	kSKY4512
Height etched (mm)	0.3	0.3	0.3	0.37	0.95	0.5	0.5
Height blasted + etched (mm)	11.2	11.2	11.2	11.2	10	10	10
Machined height (mm)	0.5	0.5	0.5	0.43	1.05	1.5	1.5
Lengths (mm)	12	12	12	12	12	12	12
Diameter(mm)	3.6	4.1	4.6	5.2	3.6	4.1	4.6
Platform diameter (mm)	3.6	4.1	4.1	4.7	4.1	4.1	4.1
Diameter apical (mm)	2.66	3.21	3.9	4.56	2.62	3.21	3.9
Thread depth max (mm)	0.45	0.45	0.45	0.45	0.45	0.45	0.45
Thread self-tapping two-stage	yes	yes	yes	yes	yes	yes	yes
14 mm REF	nSKY3514	bSKY4014	bSKY4514		kSKY3514	kSKY4014	kSKY4514
Height etched (mm)	0.3	0.3	0.3		0.95	0.5	0.5
Height blasted + etched (mm)	13.2	13.2	13.2		12	12	12
Machined height (mm)	0.5	0.5	0.5		1.05	1.5	1.5
Lengths (mm)	14	14	14		14	14	14
Diameter(mm)	3.6	4.1	4.6		3.6	4.1	4.6
Platform diameter (mm)	3.6	4.1	4.1		4.1	4.1	4.1
Diameter apical (mm)	2.66	3.21	3.9		2.62	3.21	3.9
Thread depth max (mm)	0.45	0.45	0.45		0.45	0.45	0.45
Thread self-tapping two-stage	yes	yes	yes		yes	yes	yes
16 mm REF	nSKY3516	bSKY4016			kSKY3516	kSKY4016	
Height etched (mm)	0.3	0.3			0.95	0.5	
Height blasted + etched (mm)	15.2	15.2			14	14	
Machined height (mm)	0.5	0.5			1.05	1.5	
Lengths (mm)	16	16			16	16	
Diameter(mm)	3.6	4.1			3.6	4.1	
Platform diameter (mm)	3.6	4.1			4.1	4.1	
Diameter apical (mm)	2.66	3.21			2.62	3.21	
Thread depth max (mm)	0.45	0.45			0.45	0.45	
Thread self-tapping two-stage	yes	yes			yes	yes	

SKY – Prosthetic

SKY fast & fixed abutments



REF	SKYFn001	SKYFn002	SKYFn004	SKYFn173	SKYFn175	SKYFn354	SKYFn355
Name	SKY fast & fixed Abutment NP 0° height 1 mm transversal screw-retained 1 Piece	SKY fast & fixed Abutment NP 0° height 2 mm transversal screw-retained 1 Piece	SKY fast & fixed Abutment NP 0° height 4 mm transversal screw-retained 1 Piece	SKY fast & fixed Abutment NP 17.5° height 3 mm 1 piece	SKY fast & fixed Abutment NP 17.5° height 5 mm 1 piece	SKY fast & fixed Abutment NP 35° height 4 mm 1 piece	SKY fast & fixed Abutment NP 35° height 5 mm 1 piece
quantity	1	1	1	1	1	1	1
SKY-PS22 screw				incl.	incl.	incl.	incl.
Angulation (°)	0	0	0	17.5	17.5	35	35
Gingival Height (mm)	1	2	4	2.15	3.74	1.06	1.88
Shoulder height (mm)				3.23	5	3.12	3.94
Body height (mm)	3.6	3.6	3.6	3.6	3.6	3.6	3.6
Shoulder diameter (mm)	5.65	5.65	5.65	5.65	5.65	5.65	5.65
Platform diameter (mm)	3.6	3.6	3.6	3.6	3.6	3.6	3.6
Material	titanium grade 4 KV	titanium grade 4 KV	titanium grade 4 KV	titanium grade 4 KV	titanium grade 4 KV	titanium grade 4 KV	titanium grade 4 KV
Torque (Ncm)	25	25	25	25	25	25	25
blueSKY/SKY classic	yes	yes	yes	yes	yes	yes	yes
narrowSKY	yes	yes	yes	yes	yes	yes	yes
SKY prosthetic key	yes	yes	yes	yes	yes	yes	yes
autoclavable 134°C	yes	yes	yes	yes	yes	yes	yes

SKY fast & fixed accessories



REF	SKYFFGF2	SKYFTSNP	SKYFFREG	SKYFFAOL	SKYFSCIE	SKYFFAGK
Name	SKY fast & fixed gingiva former DH 2 mm 1 Piece	SKY fast & fixed snap cap 10 Pieces	SKY fast & fixed bite registration 10 Pieces	SKY fast & fixed impression coping open tray 1 piece	SKY fast & fixed scan cap intraoral / extraoral incl. screw 1 Assortment	SKY fast & fixed impression closed short 1 Piece
quantity	1	10	10	1	1	1
SKYFFSPK screw					incl.	
Matching screw	incl.			incl.	incl.	incl.
Angulation (°)	0	0	0	0	0	0
Overall height (mm)	6.1	8	4.1	17.5	8	6.1
Shoulder diameter (mm)	5.65	5.65	5.65	5.65	5.65	5.65
Material	titanium grade 4 KV	POM	POM	titanium grade 4 KV	PEEK-Classic™	titanium grade 4 KV
Torque (Ncm)	10			10	10	10
SKY prosthetic key	yes			yes	yes	yes
autoclavable 134°C	yes	no	no	yes	yes	yes
suitable for thermal disinfectant 90°C		yes	yes		yes	

SKY – Prosthetic

SKY fast & fixed accessories



REF	SKYFFPKT	SKYFFPKC	SKYFFPKK	SKYFTPKS	SKYFFTLA	SKYdFFLA
Name	SKY fast & fixed prosthetic coping titanium with screw M 1.4 1 Assortment	SKY fast & fixed prosthetics cap CAD/CAM occlusal 1 Piece	SKY fast & fixed prosthetic coping burn-out. incl. screw M 1.4 1 Assortment	SKY fast & fixed prosthetic coping transversal screw-retained 1 piece	SKY fast & fixed laboratory analog (SKYFFLPK) 1 Piece	SKY fast & fixed laboratory analogue 3D Print 1 Piece
quantity	1	1	1	1	1	1
SKYFFSPK screw	incl.	incl.	incl.			
SKYFFLPK screw					incl.	incl.
SKYUFTS9 screw				incl.		
Fastening screw						incl.
Modelling cap				incl.		
Silicone tube	incl.					
Locking pins	incl.					
Body height (mm)					3.6	3.6
Overall height (mm)	12.4	12.4	12.4	6.1	17.6	14.1
Shoulder diameter (mm)	5.65	5.65	5.65	5.6	5.65	5.65
Material	titanium grade 4 KV	titanium grade 4 KV	PMMA	titanium grade 4 KV	stainless steel (1.4305)	titanium grade 4 KV
Prosthetic coping material				PMMA		
Torque (Ncm)	18	18	18	18	10	10
SKY prosthetic key	yes	yes	yes	yes	yes	yes
autoclavable 134°C	yes	yes	no	yes	yes	yes
suitable for thermal disinfectant 90°C			yes			
Note				coping not sterilisable		

SKY uni.cone abutments



REF	SKYUC001	SKYUC002	SKYUC003
Name	SKY uni.cone abutment height 1 mm 1 Piece	SKY uni.cone abutment height 2 mm 1 Piece	SKY uni.cone abutment height 3 mm 1 Piece
quantity	1	1	1
Angulation (°)	0	0	0
Gingival Height (mm)	1	2	3
Body height (mm)	3.3	3.3	3.3
Shoulder diameter (mm)	4.5	4.5	4.5
Platform diameter (mm)	3.6	3.6	3.6
Material	titanium grade 4 KV	titanium grade 4 KV	titanium grade 4 KV
titanium anodised	red-gold	red-gold	red-gold
Torque (Ncm)	25	25	25
blueSKY/SKY classic	yes	yes	yes
narrowSKY	yes	yes	yes
SKY prosthetic key	yes	yes	yes
autoclavable 134°C	yes	yes	yes

SKY – Prosthetic

SKY uni.cone abutments



REF	SKYUC174	SKYUC175	SKYUC254	SKYUC255
Name	SKY uni.cone abutment 17.5° height 4 mm 1 Piece	SKY uni.cone abutment 17.5° height 5 mm 1 Piece	SKY uni.cone abutment 25° height 4 mm 1 Piece	SKY uni.cone abutment 25° height 5 mm 1 Piece
quantity	1	1	1	1
SKY-PS22 screw	incl.	incl.	incl.	incl.
Angulation (°)	17.5	17.5	25	25
Gingival Height (mm)	3	3.6	2	3
Shoulder height (mm)	4	5	3.7	4.8
Body height (mm)	3.3	3.3	3.3	3.3
Shoulder diameter (mm)	4.5	4.5	4.5	4.5
Platform diameter (mm)	3.6	3.6	3.6	3.6
Material	titanium grade 4 KV	titanium grade 4 KV	titanium grade 4 KV	titanium grade 4 KV
titanium anodised	red-gold	red-gold	red-gold	red-gold
Torque (Ncm)	25	25	25	25
blueSKY/SKY classic	yes	yes	yes	yes
narrowSKY	yes	yes	yes	yes
SKY prosthetic key	yes	yes	yes	yes
autoclavable 134°C	yes	yes	yes	yes

SKY uni.cone abutments



REF	SKYUC304	SKYUC305	SKYUC354	SKYUC355
Name	SKY uni.cone abutment 30° height 4 mm 1 Piece	SKY uni.cone abutment 30° height 5 mm 1 Piece	SKY uni.cone abutment 35° height 4 mm 1 Piece	SKY uni.cone abutment 35° height 5 mm 1 Piece
quantity	1	1	1	1
SKY-PS22 screw	incl.	incl.	incl.	incl.
Angulation (°)	30	30	35	35
Gingival Height (mm)	1.5	2.5	1.5	2.3
Shoulder height (mm)	4	5	4.2	5.1
Body height (mm)	3.3	3.3	3.3	3.3
Shoulder diameter (mm)	4.5	4.5	4.5	4.5
Platform diameter (mm)	3.6	3.6	3.6	3.6
Material	titanium grade 4 KV	titanium grade 4 KV	titanium grade 4 KV	titanium grade 4 KV
titanium anodised	red-gold	red-gold	red-gold	red-gold
Torque (Ncm)	25	25	25	25
blueSKY/SKY classic	yes	yes	yes	yes
narrowSKY	yes	yes	yes	yes
SKY prosthetic key	yes	yes	yes	yes
autoclavable 134°C	yes	yes	yes	yes

Technical data

SKY – Prosthetic

uni.cone accessories for copaSKY and SKY



REF	SKYUCRC1	SKYUCGF2	SKYUSCIE	SKYUCREG	SKYUCSNP	SKYUCAGK	SKYUCAOL
Name	SKY uni.cone gingiva former RevoCone 1 Piece	SKY uni.cone gingiva former 1 Piece	SKY uni.cone scan cap intraoral / extraoral incl. screw 1 Assortment	SKY uni.cone bite registration 10 Pieces	SKY uni.cone Snap cap 10 Pieces	SKY uni.cone impression closed short 1 Piece	SKY uni.cone impression coping open tray 1 set
quantity	1	1	1	10	10	1	1
SKYFFSPK screw			incl.				
Matching screw	incl.	incl.	incl.			incl.	incl.
Angulation (°)	0	0	0	0	0	0	0
Overall height (mm)	5.1	6.1	8	4.1	8	6.1	17.5
Shoulder diameter (mm)	4.5	4.5	4.5	4.5	4.5	4.5	4.5
Material	titanium grade 4 KV	titanium grade 4 KV	PEEK-Classic™	POM	POM	titanium grade 4 KV	titanium grade 4 KV
titanium anodised		red-gold				red-gold	red-gold
Torque (Ncm)	18	10	10			10	10
Note	Torque when used as gingiva former: 10Ncm						
SKY prosthetic key	yes	yes	yes			yes	yes
autoclavable 134°C	yes	yes	yes	no	no	yes	yes
suitable for thermal disinfectant 90°C				yes	yes		

uni.cone accessories for copaSKY and SKY



REF	SKYUCPKT	SKYUCPKC	SKYUCPKK	SKYUCPKS	SKYUCTLA	SKYdUCLA
Name	SKY uni.cone prosthetic coping titanium 1 Piece	SKY uni.cone prosthetics cap CAD/CAM occlusal 1 Piece	SKY uni.cone prosthetic coping burn-out 1 Piece	SKY uni.cone prosthetic coping transversal screw-retained 1 set	SKY uni.cone laboratory analogue incl. laboratory screw 1 Piece	SKY uni.cone laboratory analogue 3D Print 1 Piece
quantity	1	1	1	1	1	1
SKYFFSPK screw	incl.	incl.	incl.			
SKYFFLPK screw					incl.	incl.
SKYUFTS9 screw				incl.		
Fastening screw						incl.
Modelling cap				incl.		
Silicone tube	incl.					
Locking pins	incl.					
Angulation (°)	0	0	0	0	0	0
Overall height (mm)	12.4	12.4	12.4	5.1	17.3	13.8
Shoulder diameter (mm)	4.5	4.5	4.5	4.5	4.5	4.5
Material	titanium grade 4 KV	titanium grade 4 KV	PMMA	titanium grade 4 KV	titanium grade 4 KV	titanium grade 4 KV
titanium anodised	red-gold	red-gold		red-gold	red-gold	
Prosthetic coping material				PMMA		
Torque (Ncm)	18	18	18	18	10	10
suitable for Allen 0.9				yes		
SKY prosthetic key	yes	yes	yes	yes		
autoclavable 134°C	yes	no	no	yes		
Note				coping not sterilisable		

SKY – Prosthetic

BioHPP SKY elegance



REF	SKYEE500	SKYEE515	SKYEEM00	SKYEEM15	SKYEEL00
Name	BioHPP SKY elegance S abutment 0° 1 Piece	BioHPP SKY elegance S abutment 15° 1 Piece	BioHPP SKY elegance M abutment 0° 1 Piece	BioHPP SKY elegance M abutment 15° 1 Piece	BioHPP SKY elegance L abutment 0° 1 Piece
quantity	1	1	1	1	1
SKY-PS22 screw	incl.	incl.	incl.	incl.	incl.
Angulation (°)	0	15	0	15	0
Gingival Height (mm)	3.4	3.4	3.4	3.4	3.4
Height (mm/in)	9	9	9	9	9
Shoulder diameter (mm)	4.5	4.5	5.5	5.5	7
Platform diameter (mm)	3.6	3.6	3.6	3.6	3.6
Body Material	BioHPP	BioHPP	BioHPP	BioHPP	BioHPP
Base material	titanium grade 4 KV	titanium grade 4 KV	titanium grade 4 KV	titanium grade 4 KV	titanium grade 4 KV
titanium anodised	red-gold	red-gold			
Torque (Ncm)	25	25	25	25	25
blueSKY/SKY classic	yes	yes	yes	yes	yes
narrowSKY	yes	yes	no	no	no
SKY prosthetic key	yes	yes	yes	yes	yes
autoclavable 134°C	yes	yes	yes	yes	yes

SKY titanium base



REF	SKYETB00	SKYETBML
Name	BioHPP SKY elegance titanium base 1 Piece	BioHPP SKY elegance titanium base ML 1 Piece
quantity	1	1
SKY-PS22 screw	incl.	incl.
Angulation (°)	0	0
Body height (mm)	5.4	5.4
Diameter(mm)	3.1	3.5
Platform diameter (mm)	3.6	3.6
Material	titanium grade 4 KV	titanium grade 4 KV
titanium anodised	red-gold	
Torque (Ncm)	25	25
Indication limited to	Front tooth area	Posterior area
Note	gingiva height min. 0.4 mm	gingiva height min. 0.4 mm
blueSKY/SKY classic	yes	yes
narrowSKY	yes	yes
SKY prosthetic key	yes	yes
autoclavable 134°C	yes	yes

SKY – Prosthetic



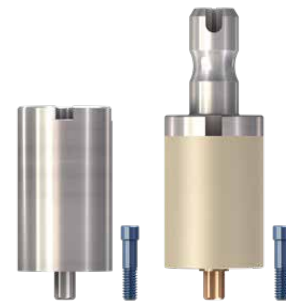
SKY temp

REF	SKYTEMPS	SKYTEMPM	SKYTEMPL
Name	SKY temp S abutment incl. screw 2.2 1 Assortment	SKY temp M abutment incl. screw 2.2 1 Assortment	SKY temp L abutment incl. screw 2.2 1 Assortment
quantity	1	1	1
SKY-PS22 screw	incl.	incl.	incl.
Angulation (°)	0	0	0
Gingival Height (mm)	3	3	3
Body height (mm)	6	6	6
Shoulder diameter (mm)	4.5	5.5	7
Platform diameter (mm)	4.1	4.1	4.1
Material	POM	POM	POM
Torque (Ncm)	18	18	18
blueSKY/SKY classic	yes	yes	yes
narrowSKY	no	no	no
SKY prosthetic key	yes	yes	yes
autoclavable 134°C	no	no	no
suitable for thermal disinfectant 90°C	yes	yes	yes



SKY scan abutment

REF	SKYUSC11
Name	SKY scan abutment 11 1 Piece
quantity	1
SKY-PS22 screw	incl.
Angulation (°)	0
Height (mm/in)	11.5
Shoulder diameter (mm)	4.5
Platform diameter (mm)	3.6
Material	titanium grade 4 KV
Torque (Ncm)	10
Note	surface optimized for scanning
blueSKY/SKY classic	yes
narrowSKY	yes
SKY prosthetic key	yes
autoclavable 134°C	yes



SKY prefabs

REF	SKYPFTST	SKYEPFST
Name	SKY prefab titanium set 1 set	BioHPP SKY elegance prefab Set SK35 Set 1 Piece
quantity	1	1
SKY-PS22 screw	incl.	incl.
Angulation (°)	0	0
Body height (mm)	20	16
Diameter(mm)	11.5	12
Shoulder diameter (mm)		
Material	titanium grade 4 KV	
Body Material		BioHPP
Base material		titanium grade 4 KV
titanium anodised		red-gold
Torque (Ncm)	25	25
Note	gingiva height min. 1 mm	gingiva height min. 0.4 mm
blueSKY/SKY classic	yes	yes
narrowSKY	yes	yes
SKY prosthetic key	yes	yes
Connection	Medentika	Sirona® Standard
autoclavable 134°C	yes	yes

SKY – Prosthetic

SKY uni.fit titanium base



REF	SKYUFCD5	SKYUFCAD	SKYUFCL2	SKYUFCL3	UFCADMOD
Name	SKY uni.fit titanium base height 5 mm 1 Piece	SKY uni.fit CAD abutment incl. screw 2.2 1 Assortment	SKY uni.fit titanium base L height 1.5 mm 1 Piece	SKY uni.fit titanium base L height 3 mm 1 Piece	Mould sleeve for uni.fit CAD abutments 10 Pieces
quantity	1	1	1	1	10
SKY-PS22 screw	incl.	incl.	incl.	incl.	
Angulation (°)	0	0	0	0	0
Gingival Height (mm)	0.4	0.4	1.5	3	
Body height (mm)	5	3.4	5	5	10
Shoulder diameter (mm)	4.2	3.8	5.5	5.5	3.8
Platform diameter (mm)	3.6	3.6	3.6	3.6	
Material	titanium grade 4 KV	titanium grade 4 KV	titanium grade 4 KV	titanium grade 4 KV	PMMA
titanium anodised		red-gold			
Torque (Ncm)	25	25	25	25	
blueSKY/SKY classic	yes	yes	yes	yes	
narrowSKY	yes	yes	yes	yes	
SKY prosthetic key	yes	yes	yes	yes	
Connection					only usable with SKYUFCAD / m2SKYUFA
autoclavable 134°C	yes	yes	yes	yes	no
suitable for thermal disinfecter 90°C					yes

SKY Ti-base flex



REF	SKYTBF00	SKYTBF20	SKYTBF0B	SKYTBF2B
Name	SKY Ti-base flex 1 piece	SKY Ti-base flex height 1.5 mm 1 piece	SKY Ti-base flex bridge 1 piece	SKY Ti-base flex bridge height 1.5 mm 1 piece
quantity	1	1	1	1
SKY-PS22 screw	incl.	incl.	incl.	incl.
Angulation (°)	0	0	0	0
Gingival Height (mm)	0.5	1.5	0.5	1.5
Body height (mm)	10	10	10	10
Shoulder diameter (mm)	4.5	4.5	4.5	4.5
Platform diameter (mm)				
Material	titanium grade 4 KV	titanium grade 4 KV	titanium grade 4 KV	titanium grade 4 KV
Torque (Ncm)	25	25	25	25
blueSKY/SKY classic	yes	yes	yes	yes
narrowSKY	yes	yes	yes	yes
SKY prosthetic key	yes	yes	yes	yes
autoclavable 134°C	yes	yes	yes	yes

SKY – Prosthetic

SKY gingiva former



REF	SKYESG02	SKYESG03	SKYESG04	SKYESG06
Name	SKY esthetic gingiva former S2 1 Piece	SKY esthetic gingiva former S3 1 Piece	SKY esthetic gingiva former S4 1 Piece	SKY esthetic gingiva former S 6 mm 1 Piece
quantity	1	1	1	1
Angulation (°)	0	0	0	0
Gingival Height (mm)	2.3	3	4	6
Shoulder diameter (mm)	4.33	4.5	4.5	4.5
Platform diameter (mm)	3.6	3.6	3.6	3.6
Material	titanium grade 4 KV	titanium grade 4 KV	titanium grade 4 KV	titanium grade 4 KV
titanium anodised	red-gold	red-gold	red-gold	red-gold
Torque (Ncm)	10	10	10	10
blueSKY/SKY classic	yes	yes	yes	yes
narrowSKY	yes	yes	yes	yes
SKY prosthetic key	yes	yes	yes	yes
autoclavable 134°C	yes	yes	yes	yes

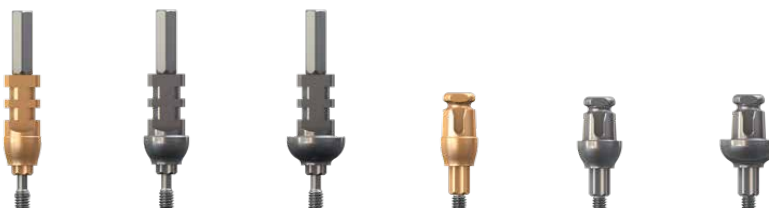
SKY gingiva former



REF	SKYEMG02	SKYEMG03	SKYEMG04	SKYEMG06	SKYELG02	SKYELG03	SKYELG04
Name	SKY esthetic gingivaformer M DH 2 mm 1 Piece	SKY esthetic gingivaformer M DH 3 mm 1 Piece	SKY esthetic gingivaformer M DH 4 mm 1 Piece	SKY esthetic gingiva former M 6 mm 1 Piece	SKY esthetic gingivaformer L DH 2 mm 1 Piece	SKY esthetic gingivaformer L DH 3 mm 1 Piece	SKY esthetic gingivaformer L DH 4 mm 1 Piece
quantity	1	1	1	1	1	1	1
Angulation (°)	0	0	0	0	0	0	0
Gingival Height (mm)	2	3	4	6	2	3	4
Shoulder diameter (mm)	4.97	5.45	5.5	5.5	6.26	6.95	7
Platform diameter (mm)	3.6	3.6	3.6	3.6	3.6	3.6	3.6
Material	titanium grade 4 KV	titanium grade 4 KV	titanium grade 4 KV	titanium grade 4 KV	titanium grade 4 KV	titanium grade 4 KV	titanium grade 4 KV
Torque (Ncm)	10	10	10	10	10	10	10
blueSKY/SKY classic	yes	yes	yes	yes	yes	yes	yes
narrowSKY	yes	yes	yes	yes	no	no	no
SKY prosthetic key	yes	yes	yes	yes	yes	yes	yes
autoclavable 134°C	yes	yes	yes	yes	yes	yes	yes

SKY – Prosthetic

SKY impression taking



REF	SKYnPAS1	SKYnPAM1	SKYnPAL1	SKYnPAS2	SKYnPAM2	SKYnPAL2
Name	SKY impression abutment S open tray NP 1 Piece	SKY impression abutment M open tray NP 1 Piece	SKY impression abutment L open tray NP 1 Piece	SKY impression abutment S closed tray NP 1 Piece	SKY impression abutment M closed tray NP 1 Piece	SKY impression abutment L closed tray NP 1 Piece
quantity	1	1	1	1	1	1
Matching screw	incl.	incl.	incl.	incl.	incl.	incl.
Angulation (°)	0	0	0	0	0	0
Body height (mm)	11	11	11	9	9	9
Height incl. screw (mm)	18.8	18.8	18.8			
Interface length (mm)	1.2	1.2	1.2	3.5	3.5	3.5
Shoulder diameter (mm)	4.5	5.5	7	4.5	5.5	7
Platform diameter (mm)	3.6	3.6	3.6	3.6	3.6	3.6
Material	titanium grade 4 KV	titanium grade 4 KV	titanium grade 4 KV	titanium grade 4 KV	titanium grade 4 KV	titanium grade 4 KV
titanium anodised	red-gold			red-gold		
Torque (Ncm)	10	10	10	10	10	10
blueSKY/SKY classic	yes	yes	yes	yes	yes	yes
narrowSKY	yes	yes	no	yes	yes	no
SKYnPAKA	no	no	no	yes	yes	yes
SKY prosthetic key	yes	yes	yes	yes	yes	yes
autoclavable 134°C	yes	yes	yes	yes	yes	yes

SKY implant analogues



REF	SKY-IA40	SKYdIA40
Name	SKY implant analogue 1 Piece	SKY implant analogue 3D Print RP 1 Piece
quantity	1	1
SKYLPS22 screw	incl.	incl.
Fastening screw		incl.
Height (mm/in)	14	8.5
Platform diameter (mm)	4	4
Material	titanium grade 4 KV	titanium grade 4 KV
Torque (Ncm)	10	10
blueSKY/SKY classic	yes	yes
narrowSKY	yes	yes
SKY prosthetic key	yes	yes

SKY uni.fit titanium base for CEREC®



REF	SKYUFCTB	SKYUFCSB
Name	SKY uni.fit titanium base S for CEREC® incl. screw 2.2 1 Piece	SKY uni.fit Scan base S for CEREC® incl. screw 2.2 1 Piece
quantity	1	1
SKY-PS22 screw	incl.	incl.
Angulation (°)	0	0
Gingival Height (mm)	0.3	5.5
Body height (mm)	4.7	4.7
Shoulder diameter (mm)	4.2	4.3
Platform diameter (mm)	3.6	3.6
Material	titanium grade 4 KV	titanium grade 4 KV
titanium anodised	red-gold	red-gold
Torque (Ncm)	25	10
Note		Can only be used as scan post
blueSKY/SKY classic	yes	yes
narrowSKY	yes	yes
SKY prosthetic key	yes	yes
Connection	CEREC®	CEREC®
autoclavable 134°C	yes	yes

SKY – Prosthetic



SKY EXSO

REF	SKYEX002	SKYEX003	SKYEX173	SKYEX175	SKYEX354	SKYEX355
Name	SKY EXSO abutment 0° height 1.5 mm 1 Piece	SKY EXSO abutment 0° height 3 mm 1 Piece	SKY EXSO abutment 17.5° height 3 mm 1 Piece	SKY EXSO abutment 17.5° height 5 mm 1 Piece	SKY EXSO abutment 35° height 4 mm 1 Piece	SKY EXSO abutment 35° height 5 mm 1 Piece
quantity	1	1	1	1	1	1
SKY-PS22 screw	incl.	incl.	incl.	incl.	incl.	incl.
Angulation (°)	0	0	17.5	17.5	35	35
Gingival Height (mm)	1.5	3	1.77	3.68	1.24	2.06
Shoulder height (mm)	1.5	3	3	5	4	5
Body height (mm)	5.55	5.55	5.55	5.55	5.55	5.55
Shoulder diameter (mm)	4.8	4.8	4.8	4.8	4.8	4.8
Platform diameter (mm)	3.6	3.6	3.6	3.6	3.6	3.6
Material	titanium grade 4 KV	titanium grade 4 KV	titanium grade 4 KV	titanium grade 4 KV	titanium grade 4 KV	titanium grade 4 KV
Torque (Ncm)	25	25	25	25	25	25
blueSKY/SKY classic	yes	yes	yes	yes	yes	yes
narrowSKY	yes	yes	yes	yes	yes	yes
SKYnPAKA	yes	yes	yes	yes	yes	yes
SKY prosthetic key	yes	yes	yes	yes	yes	yes
autoclavable 134°C	yes	yes	yes	yes	yes	yes

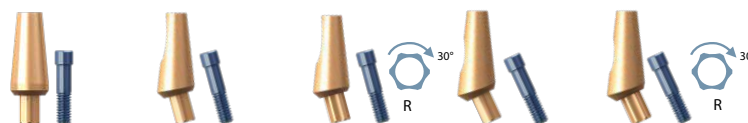


EXSO accessories

REF	SKYdEXLA	SKYnPAKA
Name	SKY EXSO lab analog 1 piece	SKY closed tray impression cap NP 10 pieces
quantity	1	10
SKYLPS22 screw	incl.	
Fastening screw	incl.	
Body height (mm)	5.55	
Overall height (mm)	15.55	4.5
Shoulder diameter (mm)	4.8	
Material	titanium grade 4 KV	POM
Torque (Ncm)	10	
SKYnPAKA	yes	
SKY prosthetic key	yes	
autoclavable 134°C		no
suitable for thermal disinfectant 90°C		yes

SKY – Prosthetic

SKY titanium abutments



REF	SKYnPO00	SKYnPO15	SKYnPO16	SKYnPO25	SKYnPO26
Name	SKY Titanium abutment NP 0° 1 Piece	SKY Titanium abutment NP 15° 1 Piece	SKY Titanium abutment NP 15° R 1 Piece	SKY Titanium abutment NP 25° 1 Piece	SKY Titanium abutment NP 25° R 1 Piece
quantity	1	1	1	1	1
SKY-PS22 screw	incl.	incl.	incl.	incl.	incl.
Angulation (°)	0	15	15	25	25
Gingival Height (mm)	1.4	0.5	0.5	0.5	0.5
Height (mm/in)	10	10	10	10	10
Interface Orientation			R = rotated by 30°		R = rotated by 30°
Shoulder diameter (mm)	4.5	4.5	4.5	4.5	4.5
Platform diameter (mm)	3.6	3.6	3.6	3.6	3.6
Material	titanium grade 4 KV	titanium grade 4 KV	titanium grade 4 KV	titanium grade 4 KV	titanium grade 4 KV
titanium anodised	red-gold	red-gold	red-gold	red-gold	red-gold
Torque (Ncm)	25	25	25	25	25
blueSKY/SKY classic	yes	yes	yes	yes	yes
narrowSKY	yes	yes	yes	yes	yes
SKY prosthetic key	yes	yes	yes	yes	yes
autoclavable 134°C	yes	yes	yes	yes	yes

SKY esthetic



REF	SKYnES00	SKYnES15	SKYnES16	SKY-EM00	SKY-EM15	SKY-EM16	SKY-EL00
Name	SKY esthetic abutment S 0° incl. screw 1 Piece	SKY esthetic abutment S 15° incl. screw 1 Piece	SKY esthetic abutment S 15° R incl. screw 1 Piece	SKY esthetic abutment M 0° incl. screw 2.2 1 Piece	SKY esthetic abutment M 15° incl. screw 2.2 1 Piece	SKY esthetic abutment M 15° R incl. screw 2.2 1 Piece	SKY esthetic abutment L 0° incl. screw 2.2 1 Piece
quantity	1	1	1	1	1	1	1
SKY-PS22 screw	incl.	incl.	incl.	incl.	incl.	incl.	incl.
Angulation (°)	0	15	15	0	15	15	0
Gingival Height (mm)	3	3	3	3	3	3	3
Height (mm/in)	9	9	9	9	9	9	9
Interface Orientation			R = rotated by 30°			R = rotated by 30°	
Shoulder diameter (mm)	4.5	4.5	4.5	5.5	5.5	5.5	7
Platform diameter (mm)	3.6	3.6	3.6	3.6	3.6	3.6	3.6
Material	titanium grade 4 KV	titanium grade 4 KV	titanium grade 4 KV	titanium grade 4 KV	titanium grade 4 KV	titanium grade 4 KV	titanium grade 4 KV
titanium anodised	red-gold	red-gold	red-gold				
Torque (Ncm)	25	25	25	25	25	25	25
blueSKY/SKY classic	yes	yes	yes	yes	yes	yes	yes
narrowSKY	yes	yes	yes	no	no	no	no
SKY prosthetic key	yes	yes	yes	yes	yes	yes	yes
autoclavable 134°C	yes	yes	yes	yes	yes	yes	yes

SKY – Prosthetic



SKY TiSi.snap

REF	SKYTISI2	SKYTISI4	SKYTISI7	SKYTISI8
Name	SKY TiSi.snap abutment height 2 mm 1 Piece	SKY TiSi.snap abutment height 4 mm 1 Piece	SKY TiSi.snap abutment 17.5° height 2 mm 1 Piece	SKY TiSi.snap abutment 17.5° height 4 mm 1 Piece
quantity	1	1	1	1
SKY-PS22 screw			incl.	incl.
Angulation (°)	0	0	17.5	17.5
Gingival Height (mm)	2	4	2	4
Shoulder height (mm)			3.8	5.9
Body height (mm)			2.7	2.7
Shoulder diameter (mm)	4.5	4.5	4.5	4.5
Platform diameter (mm)	3.6	3.6	3.6	3.6
Material	titanium grade 4 KV	titanium grade 4 KV	titanium grade 4 KV	titanium grade 4 KV
Torque (Ncm)	25	25	25	25
Retention area diameter (mm)	3.8	3.8	3.8	3.8
blueSKY/SKY classic	yes	yes	yes	yes
narrowSKY	yes	yes	yes	yes
suitable for retention.sil	yes	yes	yes	yes
Retention elements 0°-10°	yes	yes	no	no
Retention elements 10°-20°	yes	yes	yes	yes
SKY prosthetic key	yes	yes	yes	yes
autoclavable 134°C	yes	yes	yes	yes



SKY Docklocs®

REF	SKYDL010	SKYDL020	SKYDL030	SKYDL040	SKYDL060
Name	Docklocs® SKY Abutment 0° h 1.0 mm 1 piece	Docklocs® SKY Abutment 0° h 2.0 mm 1 piece	Docklocs® SKY Abutment 0° h 3.0 mm 1 piece	Docklocs® SKY Abutment 0° h 4.0 mm 1 piece	Docklocs® SKY Abutment 0° h 6.0 mm 1 piece
quantity	1	1	1	1	1
Angulation (°)	0	0	0	0	0
Gingival Height (mm)	1	2	3	4	6
Platform diameter (mm)	3.6	3.6	3.6	3.6	3.6
Material	titanium grade 5	titanium grade 5	titanium grade 5	titanium grade 5	titanium grade 5
Coating layer	ZrCN	ZrCN	ZrCN	ZrCN	ZrCN
Torque (Ncm)	25	25	25	25	25
blueSKY/SKY classic	yes	yes	yes	yes	yes
narrowSKY	yes	yes	yes	yes	yes
Retention elements 0°-10°	yes	yes	yes	yes	yes
Retention elements 10°-20°	yes	yes	yes	yes	yes
Docklocs® Instruments	yes	yes	yes	yes	yes
SKY prosthetic key	yes	yes	yes	yes	yes
autoclavable 134°C	yes	yes	yes	yes	yes

SKY – Prosthetic



SKY Docklocs®

REF	SKYDL182	SKYDL184	SKYDL185
Name	Docklocs® SKY Abutment 18° h 2.0 mm 1 piece	Docklocs® SKY Abutment 18° h 4.0 mm 1 piece	Docklocs® SKY Abutment 18° h 5.0 mm 1 piece
quantity	1	1	1
Docklocs® screw (SKY)	incl.	incl.	incl.
Angulation (°)	18	18	18
Gingival Height (mm)	2	4	5
Platform diameter (mm)	3.6	3.6	3.6
Material	titanium grade 5	titanium grade 5	titanium grade 5
Coating layer	ZrCN	ZrCN	ZrCN
Torque (Ncm)	25	25	25
blueSKY/SKY classic	yes	yes	yes
narrowSKY	yes	yes	yes
suitable for retention.sil	yes	yes	yes
Retention elements 0°-10°	no	no	no
Retention elements 10°-20°	yes	yes	yes
Docklocs® Instruments	no	no	no
SKY prosthetic key	yes	yes	yes
autoclavable 134°C	yes	yes	yes



Docklocs® accessories

REF	SKYDLIC4	SKYDLA4	SKYDLEDC
Name	Docklocs® Impression Coping (4 Pack)	Docklocs® Abutment Lab Analog (4mm Diameter) (4 Pack)	Docklocs® Enhanced Denture Cap Assembly red (4 Pack)
quantity	4	4	4
Overall height (mm)	5.3	10.5	
Material	titanium grade 5 and PE	titanium grade 5	titanium grade 5 and PE
autoclavable 134°C			
suitable for thermal disinfectant 90°C			

Docklocs® working inserts



REF	SKYDLBPI
Name	Docklocs® Processing Insert (Black) (4 Pack)
quantity	4
Material	PE
Colour	black
autoclavable 134°C	no
suitable for thermal disinfectant 90°C	no
Can be reused	no

SKY – Prosthetic

Docklocs® retention inserts 0-10°



REF	SKYDLBLU	SKYDLPIN	SKYDLCLR
Name	Docklocs® HPP Low Retention Replacement Inserts (Blue) (8 Pack)	Docklocs® HPP Medium Retention Replacement Inserts (Pink) (8 Pack)	Docklocs® HPP High Retention Replacement Inserts (Clear) (8 Pack)
quantity	8	8	8
Material	HPP	HPP	HPP
Pull-off force (N)	7	12	22
Colour	blue	pink	clear
autoclavable 134°C	yes	yes	yes
Can be reused	no	no	no

Docklocs® retention inserts 10-20°



REF	SKYDLRED	SKYDLOGE	SKYDLGRN	SKYDLGRY
Name	Docklocs® HPP Extended Pivot Low Retention Replacement Inserts (Red) (8 Pack)	Docklocs® HPP Extended Pivot Medium Retention Replacement Inserts (Orange) (8 Pack)	Docklocs® HPP Extended Pivot High Retention Replacement Inserts (Green) (8 Pack)	Docklocs® HPP Extended Pivot Zero Retention Replacement Inserts (Gray) (8 Pack)
quantity	8	8	8	8
Material	HPP	HPP	HPP	HPP
Pull-off force (N)	6	10	19	
Colour	red	orange	green	grey
autoclavable 134°C	yes	yes	yes	yes
Can be reused	no	no	no	no

Docklocs® instruments

→ page 55

SKY – Prosthetic

SKY cast



REF	SKYnPV00
Name	SKY Abutment cast-on narrow platform incl. screw 2.2 1 Piece
quantity	1
SKY-PS22 screw	incl.
Angulation (°)	0
Height (mm/in)	9.5
Shoulder diameter (mm)	4.5
Platform diameter (mm)	3.6
Body Material	PMMA
Base material	Ceramicor
Weight (in g)	0.63
Melting temperature (°C)	1400-1490
Thermal expansion coefficient $10^{-6} K^{-1}$	11.9-12.2
Torque (Ncm)	25
Note	gingiva height min. 0.5 mm
blueSKY/SKY classic	yes
narrowSKY	yes
SKY prosthetic key	yes
autoclavable 134°C	yes
Note	Base autoclavable. body not sterilisable.

SKY screws



REF	SKY-PS22	SKYLPS22	SKYVPS10	SKYFFSPK	SKYFFLPK	SKYUFTS9	
Name	SKY screw 2.2 6 Pieces	SKY laboratory screw 2.2 grey 10 Pieces	SKY locking pin screw channel 10 pieces	SKY fast & fixed / uni.cone screw M 1.4 for prosthetic coping 6 Pieces	SKY fast & fixed / uni.cone laboratory screw M 1.4 grey 10 Pieces	SKY fast & fixed / uni.cone transversal screw Hex 0.9 6 Pieces	SKY cover screw
quantity	6	10	10	6	10	6	
Lengths (mm)	9.2	9.2	14	5.3	5.3	2.5	6.7
Diameter(mm)			2.3				
Material	titanium grade 4 KV	titanium grade 4 KV	POM	titanium grade 5	titanium grade 5	titanium grade 5	titanium grade 4 KV
titanium anodised	blue			blue			red-gold / - / blue
Thread	M 1.8	M 1.8		M 1.4	M 1.4	M 2x0.25	M 1.8
Head diameter (mm)	2.2	2.2		2.05	2.2		3.6 / 4.1 / 4.7
suitable for Allen 0.9						yes	
SKY prosthetic key	yes	yes		yes	yes	no	yes
autoclavable 134°C	yes	yes		yes	yes	yes	yes

Technical data

whiteSKY Implants

whiteSKY implants



Length		Tissue Line	Tissue Line	Tissue Line	Alveo Line	Alveo Line	Alveo Line
		3.5	4.0	4.5	3.5	4.0	4.5
	quantity	1	1	1	1	1	1
	Material	zirconia	zirconia	zirconia	zirconia	zirconia	zirconia
8 mm	REF	wSKYT3508	wSKYT4008	wSKYT4508	wSKYA3508	wSKYA4008	wSKYA4508
	Gingival Height (mm)	2	2	2	2	2	2
	Height blasted (mm)	8	8	8	8	8	8
	Body height (mm)	4.5	4.5	4.5	4.5	4.5	4.5
	Lengths (mm)	8	8	8	8	8	8
	Diameter(mm)	3.6	4.1	4.6	3.6	4.1	4.6
	Shoulder diameter (mm)				5	5	6
	Platform diameter (mm)	4.6	4.6	4.6	4.6	4.6	4.6
	Diameter apical (mm)	2.77	3.7	4.21	2.77	3.7	3.79
	Thread depth max (mm)	0.45	0.45	0.45	0.45	0.45	0.45
	Thread self-tapping two-stage	yes	yes	yes	yes	yes	yes
10 mm	REF	wSKYT3510	wSKYT4010	wSKYT4510	wSKYA3510	wSKYA4010	wSKYA4510
	Gingival Height (mm)	2	2	2	2	2	2
	Height blasted (mm)	10	10	10	10	10	10
	Body height (mm)	4.5	4.5	4.5	4.5	4.5	4.5
	Lengths (mm)	10	10	10	10	10	10
	Diameter(mm)	3.6	4.1	4.6	3.6	4.1	4.6
	Shoulder diameter (mm)				5	5	6
	Platform diameter (mm)	4.6	4.6	4.6	4.6	4.6	4.6
	Diameter apical (mm)	2.77	3.7	4.21	2.77	3.7	3.79
	Thread depth max (mm)	0.45	0.45	0.45	0.45	0.45	0.45
	Thread self-tapping two-stage	yes	yes	yes	yes	yes	yes
12 mm	REF	wSKYT3512	wSKYT4012	wSKYT4512	wSKYA3512	wSKYA4012	wSKYA4512
	Gingival Height (mm)	2	2	2	2	2	2
	Height blasted (mm)	12	12	12	12	12	12
	Body height (mm)	4.5	4.5	4.5	4.5	4.5	4.5
	Lengths (mm)	12	12	12	12	12	12
	Diameter(mm)	3.6	4.1	4.6	3.6	4.1	4.6
	Shoulder diameter (mm)				5	5	6
	Platform diameter (mm)	4.6	4.6	4.6	4.6	4.6	4.6
	Diameter apical (mm)	2.62	3.48	4	2.62	3.48	4
	Thread depth max (mm)	0.45	0.45	0.45	0.45	0.45	0.45
	Thread self-tapping two-stage	yes	yes	yes	yes	yes	yes
14 mm	REF	wSKYT3514	wSKYT4014	wSKYT4514	wSKYA3514	wSKYA4014	wSKYA4514
	Gingival Height (mm)	2	2	2	2	2	2
	Height blasted (mm)	14	14	14	14	14	14
	Body height (mm)	4.5	4.5	4.5	4.5	4.5	4.5
	Lengths (mm)	14	14	14	14	14	14
	Diameter(mm)	3.6	4.1	4.6	3.6	4.1	4.6
	Shoulder diameter (mm)				5	5	6
	Platform diameter (mm)	4.6	4.6	4.6	4.6	4.6	4.6
	Diameter apical (mm)	2.62	3.48	4	2.62	3.48	4
	Thread depth max (mm)	0.45	0.45	0.45	0.45	0.45	0.45
	Thread self-tapping two-stage	yes	yes	yes	yes	yes	yes

whiteSKY – Prosthetic

whiteSKY accessories



REF	wSKYICAP	wSKYLABA	wSKYLAAL	wSKYPROC
Name	whiteSKY impression cap 5 pieces	whiteSKY laboratory analogue 1 Piece	whiteSKY A.L. Laboratory analogue 1 Piece	whiteSKY prosthetic cap 1 Piece
quantity	5	1	1	1
Body height (mm)		4.5	4.5	
Overall height (mm)		14.85	14.5	
Shoulder diameter (mm)		4.6	5	
Platform diameter (mm)		4.6	4.6	
Material	POM	PSU	PSU	BioHPP
whiteSKY A.L.	yes	no	yes	yes
whiteSKY T.L.	yes	yes	no	yes
autoclavable 134°C	no			yes
suitable for thermal disinfectant 90°C	yes			

Technical data

SKY pro guide – Instruments

SKY pro guide drill sleeve



REF	GDSL06D47510	GDSL04D47510
Name	SKY guided drill sleeve 4.75 L6 10 pieces	SKY guided drill sleeve 4.75 L4 10 Pieces
quantity	10	10
Lengths (mm)	6	4
Material	titanium grade 5	titanium grade 5
Inside diameter (mm) ²	4.75	4.75
Outside diameter (mm)	5.5	5.5
Wrench width 6-kant	5.7	5.7
autoclavable 134°C	yes	yes
Can be reused	no	no

SKY pro guide fixation



REF	GFSL06D135	GFPL27D135
Name	SKY guided fixation pin sleeve 1.35 L 6 1 piece	SKY guided fixation pin 1.35 L 27 1 piece
quantity	1	1
Working length (mm)		10
Guide length (mm)		9
Overall length (mm)	6.15	27
Working area diameter		1.25
Guide area diameter		1.33
Material	titanium grade 5	titanium grade 4 KV
Note	Outside diameter top 4 bottom 2.5 mm	
autoclavable 134°C	yes	yes
Can be reused	no	yes

SKY pro guide tissue punch



REF	TPGXLXD400
Name	SKY tissue punch guided 4.0 1 piece
quantity	1
Guide length (mm)	10
Overall length (mm)	24
Diameter(mm)	4.1
Material	stainless steel (1.4197)
Speed (rpm)	40-100
Connection	ISO 1797
autoclavable 134°C	yes
Can be reused	yes

SKY pro guide pilot drill



REF	PCDXLXD35n	PCDXLXD400	PCDXLXD450
Name	SKY pilot drill guided 3.5n 1 piece	SKY pilot drill guided 4.0 1 piece	SKY pilot drill guided 4.5 1 piece
quantity	1	1	1
Working length (mm)	7.7	7.7	7.7
Guide length (mm)	6.3	6.3	6.3
Overall length (mm)	28.65	28.65	28.65
Platform diameter (mm)	3.7	4.2	4.64
Crestal diameter (mm)	2.36	2.86	3.3
Material	stainless steel (1.4108)	stainless steel (1.4108)	stainless steel (1.4108)
Speed (rpm)	800-1000	800-1000	800-1000
copaSKY ultrashort		yes	yes
copaSKY 3.0	yes	no	no
copaSKY standard	yes	yes	yes
blueSKY/SKY classic	yes	yes	yes
narrowSKY	yes	no	no
whiteSKY A.L.	yes	yes	yes
whiteSKY T.L.	yes	yes	yes
Connection	ISO 1797	ISO 1797	ISO 1797
autoclavable 134°C	yes	yes	yes
Can be reused	yes	yes	yes

SKY pro guide – Instruments

SKY pro guide twist drill



REF	TDXL52D225	TDXL08D225	TDXL10D225	TDXL12D225	TDXL14D225	TDXL16D225
Name	SKY twist drill guided 2.25 L 5.2 1 piece	SKY twist drill guided 2.25 L 8 1 piece	SKY twist drill guided 2.25 L 10 1 piece	SKY twist drill guided 2.25 L 12 1 piece	SKY twist drill guided 2.25 L 14 1 piece	SKY twist drill guided 2.25 L 16 1 piece
quantity	1	1	1	1	1	1
Working length (mm)	7.7	10.5	12.5	14.5	16.5	18.5
Guide length (mm)	8	8	8	8	8	8
Overall length (mm)	30.35	33.15	35.15	37.15	39.15	41.15
Crestal diameter (mm)	2.25	2.25	2.25	2.25	2.25	2.25
Material	stainless steel (1.4197)	stainless steel (1.4197)	stainless steel (1.4197)	stainless steel (1.4197)	stainless steel (1.4197)	stainless steel (1.4197)
Speed (rpm)	800-1000	800-1000	800-1000	800-1000	800-1000	800-1000
copaSKY ultrashort	yes	no	no	no	no	no
copaSKY 3.0		yes	yes	yes	yes	no
copaSKY standard		yes	yes	yes	yes	no
blueSKY/SKY classic		yes	yes	yes	yes	yes
narrowSKY		yes	yes	yes	yes	yes
whiteSKY A.L.		yes	yes	yes	yes	no
whiteSKY T.L.		yes	yes	yes	yes	no
Connection	ISO 1797	ISO 1797	ISO 1797	ISO 1797	ISO 1797	ISO 1797
autoclavable 134°C	yes	yes	yes	yes	yes	yes
Can be reused	yes	yes	yes	yes	yes	yes

Technical data

SKY pro guide – Instruments

SKY pro guide final drill for hard bone



Length		3.5	4.0	4.5
		3.5N		
	quantity	1	1	1
5.2 mm	REF	FD1L52D350	FD1L52D400	FD1L52D450
	Working length (mm)	7.7	7.7	7.7
	Guide length (mm)	8	8	8
	Overall length (mm)	30.35	30.35	30.35
	Crestal diameter (mm)	3.3	3.8	4.3
	Material	stainless steel (1.4197)	stainless steel (1.4197)	stainless steel (1.4197)
	Speed (rpm)	300	300	300
	copaSKY ultrashort	yes	yes	yes
	copaSKY 3.0	no	no	no
	copaSKY standard			
	blueSKY/SKY classic			
	narrowSKY			
	whiteSKY A.L.			
	whiteSKY T.L.			
	Connection	ISO 1797	ISO 1797	ISO 1797
	autoclavable 134°C	yes	yes	yes
	Can be reused	yes	yes	yes
8 mm	REF	FD1L08D350	FD1L08D400	FD1L08D450
	Working length (mm)	10.5	10.5	10.5
	Guide length (mm)	8	8	8
	Overall length (mm)	33.15	33.15	33.15
	Crestal diameter (mm)	3.3	3.8	4.3
	Material	stainless steel (1.4197)	stainless steel (1.4197)	stainless steel (1.4197)
	Speed (rpm)	300	300	300
	copaSKY ultrashort	no	no	no
	copaSKY 3.0	no	no	no
	copaSKY standard	yes	yes	yes
	blueSKY/SKY classic	yes	yes	yes
	narrowSKY	yes	no	no
	whiteSKY A.L.	yes	yes	yes
	whiteSKY T.L.	yes	yes	yes
	Connection	ISO 1797	ISO 1797	ISO 1797
	autoclavable 134°C	yes	yes	yes
	Can be reused	yes	yes	yes
10 mm	REF	FD1L10D350	FD1L10D400	FD1L10D450
	Working length (mm)	12.5	12.5	12.5
	Guide length (mm)	8	8	8
	Overall length (mm)	35.15	35.15	35.15
	Crestal diameter (mm)	3.3	3.8	4.3
	Material	stainless steel (1.4197)	stainless steel (1.4197)	stainless steel (1.4197)
	Speed (rpm)	300	300	300
	copaSKY ultrashort	no	no	no
	copaSKY 3.0	no	no	no
	copaSKY standard	yes	yes	yes
	blueSKY/SKY classic	yes	yes	yes
	narrowSKY	yes	no	no
	whiteSKY A.L.	yes	yes	yes
	whiteSKY T.L.	yes	yes	yes
	Connection	ISO 1797	ISO 1797	ISO 1797
	autoclavable 134°C	yes	yes	yes
	Can be reused	yes	yes	yes

SKY pro guide – Instruments

SKY pro guide final drill for hard bone

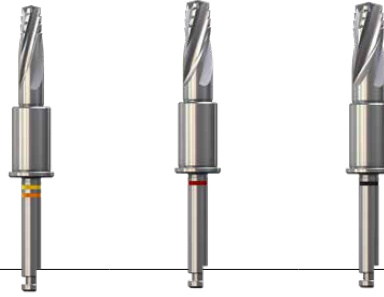


Length		3.5	4.0	4.5
		3.5N		
	quantity	1	1	1
12 mm	REF	FD1L12D350	FD1L12D400	FD1L12D450
	Working length (mm)	14.5	14.5	14.5
	Guide length (mm)	8	8	8
	Overall length (mm)	37.15	37.15	37.15
	Crestal diameter (mm)	3.3	3.8	4.3
	Material	stainless steel (1.4197)	stainless steel (1.4197)	stainless steel (1.4197)
	Speed (rpm)	300	300	300
	copaSKY ultrashort	no	no	no
	copaSKY 3.0	no	no	no
	copaSKY standard	yes	yes	yes
	blueSKY/SKY classic	yes	yes	yes
	narrowSKY	yes	no	no
	whiteSKY T.L.	yes	yes	yes
	Connection	ISO 1797	ISO 1797	ISO 1797
	autoclavable 134°C	yes	yes	yes
	Can be reused	yes	yes	yes
14 mm	REF	FD1L14D350	FD1L14D400	FD1L14D450
	Working length (mm)	16.5	16.5	16.5
	Guide length (mm)	8	8	8
	Overall length (mm)	39.15	39.15	39.15
	Crestal diameter (mm)	3.3	3.8	4.3
	Material	stainless steel (1.4197)	stainless steel (1.4197)	stainless steel (1.4197)
	Speed (rpm)	300	300	300
	copaSKY ultrashort	no	no	no
	copaSKY 3.0	no	no	no
	copaSKY standard	yes	yes	yes
	blueSKY/SKY classic	yes	yes	yes
	narrowSKY	yes	no	no
	whiteSKY A.L.	yes	yes	yes
	whiteSKY T.L.	yes	yes	yes
	Connection	ISO 1797	ISO 1797	ISO 1797
	autoclavable 134°C	yes	yes	yes
	Can be reused	yes	yes	yes
16 mm	REF	FD1L16D350	FD1L16D400	
	Working length (mm)	18.5	18.5	
	Guide length (mm)	8	8	
	Overall length (mm)	41.15	41.15	
	Crestal diameter (mm)	3.3	3.8	
	Material	stainless steel (1.4197)	stainless steel (1.4197)	
	Speed (rpm)	300	300	
	copaSKY ultrashort	no	no	
	copaSKY 3.0	no	no	
	copaSKY standard	no	no	
	blueSKY/SKY classic	yes	yes	
	narrowSKY	yes	no	
	whiteSKY A.L.	no	no	
	whiteSKY T.L.	no	no	
	Connection	ISO 1797	ISO 1797	
	autoclavable 134°C	yes	yes	
	Can be reused	yes	yes	

Technical data

SKY pro guide – Instruments

SKY pro guide final drill for medium and soft bone



Length		3.5 3.5N	4.0	4.5
	quantity	1	1	1
5.2 mm	REF	FD2L52D350	FD2L52D400	FD2L52D450
	Working length (mm)	7.7	7.7	7.7
	Guide length (mm)	8	8	8
	Overall length (mm)	30.35	30.35	30.35
	Crestal diameter (mm)	3.06	3.56	4.06
	Material	stainless steel (1.4197)	stainless steel (1.4197)	stainless steel (1.4197)
	Speed (rpm)	300	300	300
	copaSKY ultrashort	yes	yes	yes
	copaSKY 3.0	no	no	no
	copaSKY standard			
	blueSKY/SKY classic			
	narrowSKY			
	whiteSKY A.L.			
	whiteSKY T.L.			
	Connection	ISO 1797	ISO 1797	ISO 1797
	autoclavable 134°C	yes	yes	yes
	Can be reused	yes	yes	yes
8 mm	REF	FD2L08D350	FD2L08D400	FD2L08D450
	Working length (mm)	10.5	10.5	10.5
	Guide length (mm)	8	8	8
	Overall length (mm)	33.15	33.15	33.15
	Crestal diameter (mm)	3.3	3.8	4.3
	Material	stainless steel (1.4197)	stainless steel (1.4197)	stainless steel (1.4197)
	Speed (rpm)	300	300	300
	copaSKY ultrashort	no	no	no
	copaSKY 3.0	no	no	no
	copaSKY standard	yes	yes	yes
	blueSKY/SKY classic	yes	yes	yes
	narrowSKY	yes	no	no
	whiteSKY A.L.	yes	yes	yes
	whiteSKY T.L.	yes	yes	yes
	Connection	ISO 1797	ISO 1797	ISO 1797
	autoclavable 134°C	yes	yes	yes
	Can be reused	yes	yes	yes
10 mm	REF	FD2L10D350	FD2L10D400	FD2L10D450
	Working length (mm)	12.5	12.5	12.5
	Guide length (mm)	8	8	8
	Overall length (mm)	35.15	35.15	35.15
	Crestal diameter (mm)	3.06	3.56	4.06
	Material	stainless steel (1.4197)	stainless steel (1.4197)	stainless steel (1.4197)
	Speed (rpm)	300	300	300
	copaSKY ultrashort	no	no	no
	copaSKY 3.0	no	no	no
	copaSKY standard	yes	yes	yes
	blueSKY/SKY classic	yes	yes	yes
	narrowSKY	yes	no	no
	whiteSKY A.L.	yes	yes	yes
	whiteSKY T.L.	yes	yes	yes
	Connection	ISO 1797	ISO 1797	ISO 1797
	autoclavable 134°C	yes	yes	yes
	Can be reused	yes	yes	yes

SKY pro guide – Instruments

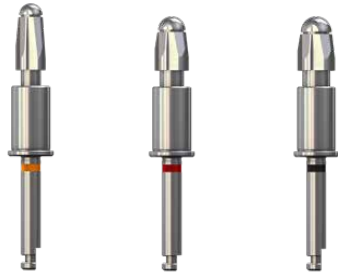
SKY pro guide final drill for medium and soft bone



Length		3.5 3.5N	4.0	4.5
	quantity	1	1	1
12 mm	REF	FD2L12D350	FD2L12D400	FD2L12D450
	Working length (mm)	14.5	14.5	14.5
	Guide length (mm)	8	8	8
	Overall length (mm)	37.15	37.15	37.15
	Crestal diameter (mm)	3.06	3.56	4.06
	Material	stainless steel (1.4197)	stainless steel (1.4197)	stainless steel (1.4197)
	Speed (rpm)	300	300	300
	copaSKY ultrashort	no	no	no
	copaSKY 3.0	no	no	no
	copaSKY standard	yes	yes	yes
	blueSKY/SKY classic	yes	yes	yes
	narrowSKY	yes	no	no
	whiteSKY A.L.	yes	yes	yes
	whiteSKY T.L.	yes	yes	yes
	Connection	ISO 1797	ISO 1797	ISO 1797
	autoclavable 134°C	yes	yes	yes
	Can be reused	yes	yes	yes
14 mm	REF	FD2L14D350	FD2L14D400	FD2L14D450
	Working length (mm)	16.5	16.5	16.5
	Guide length (mm)	8	8	8
	Overall length (mm)	39.15	39.15	39.15
	Crestal diameter (mm)	3.06	3.56	4.06
	Material	stainless steel (1.4197)	stainless steel (1.4197)	stainless steel (1.4197)
	Speed (rpm)	300	300	300
	copaSKY ultrashort	no	no	no
	copaSKY 3.0	no	no	no
	copaSKY standard	yes	yes	yes
	blueSKY/SKY classic	yes	yes	yes
	narrowSKY	yes	no	no
	whiteSKY A.L.	yes	yes	yes
	whiteSKY T.L.	yes	yes	yes
	Connection	ISO 1797	ISO 1797	ISO 1797
	autoclavable 134°C	yes	yes	yes
	Can be reused	yes	yes	yes
16 mm	REF	FD2L16D350	FD2L16D400	
	Working length (mm)	18.5	18.5	
	Guide length (mm)	8	8	
	Overall length (mm)	41.15	41.15	
	Crestal diameter (mm)	3.06	3.56	
	Material	stainless steel (1.4197)	stainless steel (1.4197)	
	Speed (rpm)	300	300	
	copaSKY ultrashort	no	no	
	copaSKY 3.0	no	no	
	copaSKY standard	no	no	
	blueSKY/SKY classic	yes	yes	
	narrowSKY	yes	no	
	whiteSKY A.L.	no	no	
	whiteSKY T.L.	no	no	
	Connection	ISO 1797	ISO 1797	
	autoclavable 134°C	yes	yes	
	Can be reused	yes	yes	

Technical data

SKY pro guide – Instruments



SKY pro guide crestal drill

	3.5 N	4.0	4.5
REF	CRDXLXD35n	CRDXLXD400	CRDXLXD450
Name	SKY crestal drill guided 3.5n 1 piece	SKY crestal drill guided 4.0 1 piece	SKY crestal drill guided 4.5 1 piece
quantity	1	1	1
Working length (mm)	10.2	8.65	8.65
Guide length (mm)	8	8	8
Overall length (mm)	32.85	31.3	31.3
Crestal diameter (mm)	3.6	4.1	4.6
Material	stainless steel (1.4197)	stainless steel (1.4197)	stainless steel (1.4197)
Speed (rpm)	300	300	300
copaSKY ultrashort	no	yes	yes
copaSKY 3.0	no	no	no
copaSKY standard	yes	yes	yes
blueSKY/SKY classic	no	yes	yes
narrowSKY	yes	no	no
whiteSKY A.L.	no	no	no
whiteSKY T.L.	yes	yes	yes
Connection	ISO 1797	ISO 1797	ISO 1797
autoclavable 134°C	yes	yes	yes
Can be reused	yes	yes	yes

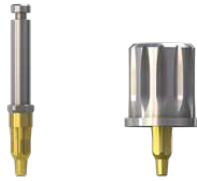


SKY pro guide implant mounting tool

REF	COPMLXDSET	COPAIMSM163	SKYMLXDSET	SKY-DS04
Name	copaSKY implant mouter guided + copaSKY implant mouter screw 1 set	copaSKY implant mouter screw 3 pieces	SKY implant mouter guided + SKY implant mouter screw 1 set	SKY screw for bar base DH 4 mm 3 Pieces
quantity	1	3	1	3
Screw COPAIMSM163	incl.			
SKY-DS04 screw			incl.	
Lengths (mm)		11.5		12.5
Material	stainless steel (1.4123)	titanium grade 4 KV	stainless steel (1.4123)	titanium grade 4 KV
Screw material	titanium grade 4 KV		titanium grade 4 KV	
titanium anodised		magenta		
blueSKY/SKY classic	no	no	yes	yes
narrowSKY	no	no	yes	yes
SKY prosthetic key	yes	yes	yes	yes
SKY-WTK1/SKY-STK1	yes	no	yes	no
autoclavable 134°C	yes	yes	yes	yes
Can be reused	mouter only	no	mouter only	no

SKY pro guide – Instruments

SKY pro guide implant mounting tool



REF	SKY-WTK1	SKY-STK1
Name	SKY TK mounter contra-angle extra short 1 Piece	SKY TK-mounter for ratchet extra short 1 Piece
quantity	1	1
Overall length (mm)	21	16
Material	stainless steel (1.4123)	stainless steel (1.4123)
Coating layer	TiN	TiN
blueSKY/SKY classic	yes	yes
narrowSKY	yes	yes
Connection	ISO 1797	wrench
autoclavable 134°C	yes	yes
Can be reused	yes	yes

Technical data

Surgical and prosthetic Instruments



pilot drill

REF	SKY-DP06	SKY-DP08
Name	SKY pilot drill short shaft 1 Piece	SKY pilot drill long shaft 1 Piece
quantity	1	1
Working length (mm)	8.75	8.75
Overall length (mm)	26	34
Crestal diameter (mm)	3.1	3.1
Material	stainless steel (1.4108)	stainless steel (1.4108)
Speed (rpm)	800-1000	800-1000
Connection	ISO 1797	ISO 1797
autoclavable 134°C	yes	yes
Can be reused	yes	yes



twistdrills

REF	SKYDT13L	SKYDT23K	SKYDT23L
Name	SKY Twistdrill Ø 1.3 mm L 6-14 mm 1 Piece	SKY Twistdrill short Ø 2.25 mm L 6-16 mm 1 Piece	SKY Twistdrill long Ø 2.25 mm L 6-16 mm 1 Piece
quantity	1	1	1
Working length (mm)	16.15	16.15	16.15
Overall length (mm)	41	41	36
Crestal diameter (mm)	1.3	2.25	2.25
Material	stainless steel (1.4197)	stainless steel (1.4197)	stainless steel (1.4197)
Speed (rpm)	800-1000	800-1000	800-1000
Connection	ISO 1797	ISO 1797	ISO 1797
autoclavable 134°C	yes	yes	yes
Can be reused	yes	yes	yes

Surgical and prosthetic Instruments

final drill for hard bone



	3.0	3.5 3.5 N	4.0	4.5	5.5	6.0
REF	COPD1230	SKYD1235	SKYD1240	SKYD1245	SKYD1255	COPD1260
Name	copaSKY Drill for hard bone Ø 3.0 mm L 08 - 14 mm 1 Piece	SKY Drill for hard bone Ø 3.5 mm L 10-16 mm 1 Piece	SKY Drill for hard bone Ø 4.0 mm L 08-16 mm 1 Piece	SKY Drill for hard bone Ø 4.5 mm L 08-14 mm 1 Piece	SKY Drill for hard bone Ø 5.5 mm L 08-12 mm 1 Piece	copaSKY Drill for hard bone Ø 6.0 mm L 05-10 mm 1 Piece
quantity	1	1	1	1	1	1
Working length (mm)	14.7	16.2	16.2	16.2	16.2	10.7
Overall length (mm)	36	37	37	37	37	33
Crestal diameter (mm)	2.8	3.3	3.8	4.3	4.9	5.7
Material	stainless steel (1.4197)	stainless steel (1.4197)	stainless steel (1.4197)	stainless steel (1.4197)	stainless steel (1.4197)	stainless steel (1.4197)
Speed (rpm)	300	300	300	300	300	300
copaSKY ultrashort	no	yes	yes	yes	yes	yes
copaSKY 3.0	yes	no	no	no	no	no
copaSKY standard		yes	yes	yes	yes	yes
blueSKY/SKY classic		yes	yes	yes	yes	no
narrowSKY		yes	no	no	no	no
whiteSKY A.L.		yes	yes	yes	no	no
whiteSKY T.L.		yes	yes	yes	no	no
Connection	ISO 1797	ISO 1797	ISO 1797	ISO 1797	ISO 1797	ISO 1797
autoclavable 134°C	yes	yes	yes	yes	yes	yes
Can be reused	yes	yes	yes	yes	yes	yes

final drill for medium and soft bone



	3.0	3.5 3.5 N	4.0	4.5	5.5	6.0
REF	COPD3430	SKYD3435	SKYD3440	SKYD3445	SKYD3455	COPD3460
Name	copaSKY Drill for medium and soft bone Ø 3.0 mm L 08 - 14 mm 1 Piece	SKY Drill for medium and soft bone Ø 3.5 mm L 10-16 mm 1 Piece	SKY Drill for medium and soft bone Ø 4.0 mm L 08-16 mm 1 Piece	SKY Drill for medium and soft bone Ø 4.5 mm L 08-14 mm 1 Piece	SKY Drill for medium and soft bone Ø 5.5 mm L 08-12 mm 1 Piece	copaSKY Drill for soft bone Ø 6.0 mm L 05-10 mm 1 Piece
quantity	1	1	1	1	1	1
Working length (mm)	14.7	16.2	16.2	16.2	16.2	10.7
Overall length (mm)	36	37	37	37	37	33
Crestal diameter (mm)	2.56	3.06	3.56	4.06	4.66	5.46
Material	stainless steel (1.4197)	stainless steel (1.4197)	stainless steel (1.4197)	stainless steel (1.4197)	stainless steel (1.4197)	stainless steel (1.4197)
Speed (rpm)	300	300	300	300	300	300
copaSKY ultrashort	no	yes	yes	yes	yes	yes
copaSKY 3.0	yes	no	no	no	no	no
copaSKY standard		yes	yes	yes	yes	yes
blueSKY/SKY classic		yes	yes	yes	yes	no
narrowSKY		yes	no	no	no	no
whiteSKY A.L.		yes	yes	yes	no	no
whiteSKY T.L.		yes	yes	yes	no	no
Connection	ISO 1797	ISO 1797	ISO 1797	ISO 1797	ISO 1797	ISO 1797
autoclavable 134°C	yes	yes	yes	yes	yes	yes
Can be reused	yes	yes	yes	yes	yes	yes

Technical data

Surgical and prosthetic Instruments



crestal drill

	3.0	3.5 N	4.0	4.5	5.5	6.0
REF	COPACD30	SKYCD35n	SKYXCD40	SKYXCD45	SKYXCD55	COPACD60
Name	copaSKY crestal drill 3.0 1 Piece	narrowSKY Crestal drill 3.5 N 1 Piece	SKY crestal drill Ø 4.0 mm 1 Piece	SKY crestal drill Ø 4.5 mm 1 Piece	SKY crestal drill Ø 5.5 mm 1 Piece	copaSKY crestal drill Ø 6.0 mm 1 Piece
quantity	1	1	1	1	1	1
Working length (mm)	8.5	8.5	7	7	7.55	7.55
Overall length (mm)	31	31	31	31	31	31
Crestal diameter (mm)	3.1	3.6	4.1	4.6	5.2	6
Material	stainless steel (1.4197)	stainless steel (1.4197)	stainless steel (1.4197)	stainless steel (1.4197)	stainless steel (1.4197)	stainless steel (1.4197)
Speed (rpm)	300	300	300	300	300	300
copaSKY ultrashort	no	no	yes	yes	yes	yes
copaSKY 3.0	yes	no	no	no	no	no
copaSKY standard	no	yes	yes	yes	yes	yes
blueSKY/SKY classic	no	no	yes	yes	yes	no
narrowSKY	no	yes	no	no	no	no
whiteSKY A.L.	no	no	no	no	no	no
whiteSKY T.L.	no	yes	yes	yes	no	no
Connection	ISO 1797	ISO 1797	ISO 1797	ISO 1797	ISO 1797	ISO 1797
autoclavable 134°C	yes	yes	yes	yes	yes	yes
Can be reused	yes	yes	yes	yes	yes	yes



whiteSKY Alveo Line crestal drill

	3.5	4.0	4.5
REF	SKYXCD355	SKYXCD405	SKYXCD456
Name	whiteSKY crestal drill A.L. 3.5 D1-D3 1 piece	whiteSKY crestal drill A.L. 4.0 D1-D3 1 piece	whiteSKY crestal drill A.L. 4.5 D1-D3 1 piece
quantity	1	1	1
Working length (mm)	8.25	8.25	8.25
Overall length (mm)	32.25	32.25	32.25
Crestal diameter (mm)	5.1	5.1	6.1
Material	stainless steel (1.4197)	stainless steel (1.4197)	stainless steel (1.4197)
Speed (rpm)	300	300	300
copaSKY ultrashort	no	no	no
copaSKY 3.0	no	no	no
copaSKY standard	no	no	no
blueSKY/SKY classic	no	no	no
narrowSKY	no	no	no
whiteSKY A.L.	yes	yes	yes
whiteSKY T.L.	no	no	no
Connection	ISO 1797	ISO 1797	ISO 1797
autoclavable 134°C	yes	yes	yes
Can be reused	yes	yes	yes

Surgical and prosthetic Instruments

Depth stop



		Twistdrill 3.0	3.5 N 3.5 4.0	4.5 5.5	6.0
quantity		1	1	1	1
5.2 mm	REF	COPAXS05	COPS0540	COPS0550	COPS0560
		copaSKY depth stop Twistdrill L 5.2 mm 1 Piece	copaSKY depth stop Ø 4.0 mm L 5.2 mm 1 Piece	copaSKY depth stop Ø 5.0 mm L 5.2 mm 1 Piece	copaSKY depth stop Ø 6.0 mm L 5.2 mm 1 Piece
Material		stainless steel (1.4305)	stainless steel (1.4305)	stainless steel (1.4305)	stainless steel (1.4305)
copaSKY ultrashort		yes	yes	yes	yes
copaSKY 3.0		no	no	no	no
copaSKY standard					
blueSKY/SKY classic					
narrowSKY			no	no	no
whiteSKY A.L.				no	no
whiteSKY T.L.				no	no
autoclavable 134°C		yes	yes	yes	yes
Can be reused		yes	yes	yes	yes
8 mm	REF	SKYXST08	SKYS0840	SKYS0845	COPS0860
		SKY depth stop Twistdrill L 0.8 mm 1 Piece	SKY depth stop Ø 4.0 mm L 08 mm 1 Piece	SKY depth stop Ø 4.5 mm L 08 mm 1 Piece	copaSKY depth stop Ø 6.0 mm L 8.0 mm 1 Piece
Material		stainless steel (1.4305)	stainless steel (1.4305)	stainless steel (1.4305)	stainless steel (1.4305)
copaSKY ultrashort		no	no	no	no
copaSKY 3.0		yes	no	no	no
copaSKY standard		yes	yes	yes	yes
blueSKY/SKY classic		yes	yes	yes	
narrowSKY		yes	yes	no	no
whiteSKY A.L.		yes	yes	yes	no
whiteSKY T.L.		yes	yes	yes	no
autoclavable 134°C		yes	yes	yes	yes
Can be reused		yes	yes	yes	yes
10 mm	REF	SKYXST10	SKYS1040	SKYS1045	
		SKY depth stop Twistdrill L 10 mm 1 Piece	SKY depth stop Ø 3.5/4.0 mm L 10 mm 1 Piece	SKY depth stop Ø 4.5 mm L 10 mm 1 Piece	
Material		stainless steel (1.4305)	stainless steel (1.4305)	stainless steel (1.4305)	
copaSKY ultrashort		no	no	no	
copaSKY 3.0		yes	no	no	
copaSKY standard		yes	yes	yes	
blueSKY/SKY classic		yes	yes	yes	
narrowSKY		yes	yes	no	
whiteSKY A.L.		yes	yes	yes	
whiteSKY T.L.		yes	yes	yes	
autoclavable 134°C		yes	yes	yes	
Can be reused		yes	yes	yes	

Technical data

Surgical and prosthetic Instruments



Depth stop

Length	Twistdrill	3.5 N	4.5
	3.0	3.5	5.5
		4.0	
quantity	1	1	1
12 mm	REF	SKYXST12	SKYS1240
		SKY depth stop Twistdrill L 12 mm 1 Piece	SKY depth stop Ø 3.5/4.0 mm L 12 mm 1 Piece
		SKYS1245	SKY depth stop Ø 4.5 mm L 12 mm 1 Piece
	Material	stainless steel (1.4305)	stainless steel (1.4305)
	copaSKY ultrashort	no	no
	copaSKY 3.0	yes	no
	copaSKY standard	yes	yes
	blueSKY/SKY classic	yes	yes
	narrowSKY	yes	no
	whiteSKY A.L.	yes	yes
	whiteSKY T.L.	yes	yes
	autoclavable 134°C	yes	yes
	Can be reused	yes	yes
14 mm	REF	SKYXST14	SKYS1440
		SKY depth stop Twistdrill L 14 mm 1 Piece	SKY depth stop Ø 3.5/4.0 mm L 14 mm 1 Piece
		SKYS1445	SKY depth stop Ø 4.5 mm L 14 mm 1 Piece
	Material	stainless steel (1.4305)	stainless steel (1.4305)
	copaSKY ultrashort	no	no
	copaSKY 3.0	no	no
	copaSKY standard	yes	yes
	blueSKY/SKY classic	yes	yes
	narrowSKY	yes	no
	whiteSKY A.L.	yes	yes
	whiteSKY T.L.	yes	yes
	autoclavable 134°C	yes	yes
	Can be reused	yes	yes
16 mm	REF	SKYXST16	SKYS1640
		SKY depth stop Twistdrill L 16 mm 1 Piece	SKY depth stop Ø 3.5/4.0 mm L 16 mm 1 Piece
		SKYS1645	SKY depth stop Ø 4.5 mm L 16 mm 1 Piece
	Material	stainless steel (1.4305)	stainless steel (1.4305)
	copaSKY ultrashort	no	no
	copaSKY 3.0	no	no
	copaSKY standard	yes	yes
	blueSKY/SKY classic	yes	yes
	narrowSKY	yes	yes
	whiteSKY A.L.	no	no
	whiteSKY T.L.	no	no
	autoclavable 134°C	yes	yes
	Can be reused	yes	yes

SKY torque wrench



REF	SKY-SD50	SKYTWPR1
Name	SKY torque wrench 100 1 Piece	SKY Torque Wrench Pro 1 Piece
quantity	1	1
Material	stainless steel	stainless steel
autoclavable 134°C	yes	yes
Can be reused	yes	yes

Surgical and prosthetic Instruments

copaSKY implant mounting tool



REF	COPACTK5	COPACTK6	COPASTK5	COPASTK6
Name	copaSKY TK mounter contra-angle short 1 Piece	copaSKY TK mounter long contra-angle long 1 Piece	copaSKY Ratchet driver short 1 Piece	copaSKY Ratchet driver long 1 Piece
quantity	1	1	1	1
Overall length (mm)	27	34	22.4	28.4
Material	stainless steel (1.4123)	stainless steel (1.4123)	stainless steel (1.4123)	stainless steel (1.4123)
Coating layer	TiN	TiN	TiN	TiN
copaSKY ultrashort	yes	yes	yes	yes
copaSKY 3.0	yes	yes	yes	yes
copaSKY standard	yes	yes	yes	yes
Connection	ISO 1797	ISO 1797	wrench	wrench
autoclavable 134°C	yes	yes	yes	yes
Can be reused	yes	yes	yes	yes

SKY implant mounting tool



REF	SKY-WTK5	SKY-WTK6	SKY-STK5	SKY-STK6	wSKYITCA	wSKYITTW
Name	SKY TK mounter contra-angle short 1 Piece	SKY TK mounter long 1 Piece	SKY TK mounter for ratchet short 1 Piece	SKY TK mounter for ratchet long 1 Piece	whiteSKY insertion tool 1 Piece	whiteSKY mounter for ratchet 1 Piece
quantity	1	1	1	1	1	1
Overall length (mm)	24	34	24	30	24	22
Material	stainless steel (1.4123)	stainless steel (1.4123)	stainless steel (1.4123)	stainless steel (1.4123)	stainless steel (1.4123)	stainless steel (1.4123)
Coating layer	TiN	TiN	TiN	TiN		
blueSKY/SKY classic	yes	yes	yes	yes	no	no
narrowSKY	yes	yes	yes	yes	no	no
whiteSKY A.L.	no	no	no	no	yes	yes
whiteSKY T.L.	no	no	no	no	yes	yes
Connection	ISO 1797	ISO 1797	wrench	wrench	ISO 1797	wrench
autoclavable 134°C	yes	yes	yes	yes	yes	yes
Can be reused	yes	yes	yes	yes	yes	yes

Technical data

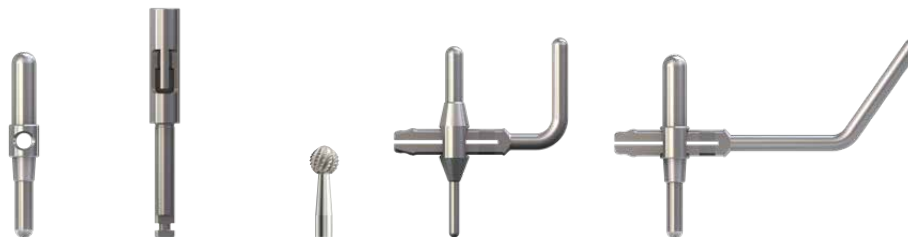
Surgical and prosthetic Instruments

prosthetic key



REF	SKY-SD16	SKY-SD25	SKY-SD22	SKY-SD28	310W0106	SKYTWCO1
Name	SKY prosthetic key short 16 mm 1 Piece	SKY prosthetic key long 25 mm 1 Piece	SKY prosthetic key for contra-angle short 1 Piece	SKY prosthetic key for contra-angle long 1 Piece	Screwdriver 6 long Allen 0.9 contra-angles 1 Piece	SKY Connector Pro 1 Piece
quantity	1	1	1	1	1	1
Lengths (mm)	19	26.5	22	28	25	14.9
Material	stainless steel (1.4021)	stainless steel (1.4021)	stainless steel (1.4021)	stainless steel (1.4021)	stainless steel (1.4123)	stainless steel
Connection	wrench	wrench	ISO 1797	ISO 1797	ISO 1797	wrench
autoclavable 134°C	yes	yes	yes	yes	yes	yes
Can be reused	yes	yes	yes	yes	yes	yes

accessories



REF	SKY-PI22	SKY-DV12	SKY-DR41	mSKYPARA	SKYFFS35
Name	SKY parallel indicator 2.0 + 3.0 mm 1 Piece	SKY drill extension 1 Piece	SKY bone bur Ø 4.1 mm 1 Piece	miniSKY 0° parallelization tool 1 Piece	SKY fast & fixed Angulation aid set 35° 1 Piece
quantity	1	1	1	1	1
Overall length (mm)		28	34		
Diameter(mm)	2.2 / 3.0		4.1	1.25 / 2.2	2.2 / 3.0
Material	stainless steel (1.4035)	shaft: 1.4197; holder 1.4305	stainless steel (1.4112)	stainless steel	stainless steel
Speed (rpm)			800-1000		
Connection		ISO 1797	ISO 1797		
autoclavable 134°C	yes	yes	yes	yes	yes
Can be reused	yes	yes	yes	yes	yes

Surgical and prosthetic Instruments



Docklocs® tools

REF	SKYDLUI2	SKYDLTLD
Name	Docklocs® System Tool. 2 Piece	Docklocs® Latch Handpiece Driver. Tri-Lobe
quantity	1	1
Material	stainless steel (1.4305 and 1.4035)	stainless steel (1.4305 and 1.4035)
Connection		ISO 1797
autoclavable 134°C	yes	yes

Technical data

Overview

overview of screws



REF	COPASM16	COPALM16	COPAIMSM163		SKY-PS22	SKYLPS22	
Name	copaSKY abutment screw M1.6 6 pieces	copaSKY laboratory screw M1.6 10 pieces	copaSKY implant mounter screw 3 pieces	copaSKY cover screw	SKY screw 2.2 6 Pieces	SKY laboratory screw 2.2 grey 10 Pieces	SKY cover screw
quantity	6	10	3		6	10	
Lengths (mm)	6.4	6.4	11.5	4.55	9.2	9.2	6.7
Material	titanium grade 5	titanium grade 5	titanium grade 4 KV	titanium grade 4 KV	titanium grade 4 KV	titanium grade 4 KV	titanium grade 4 KV
titanium anodised	magenta		magenta	magenta	blue		red-gold / - / blue
Thread	M 1.6	M 1.6	M 1.6	M 1.6	M 1.8	M 1.8	M 1.8
Head diameter (mm)	2.2	2.2	2.4	2.9	2.2	2.2	3.6 / 4.1 / 4.7
SKY prosthetic key	yes	yes	yes	yes	yes	yes	yes
autoclavable 134°C	yes	yes	yes	yes	yes	yes	yes

overview of screws



REF	m2SKYS22	m2SKYL22	SKYFFSPK	SKYFFLPK	SKYUFTS9	SKY-DS04	SKYVPS10
Name	mini2SKY screw M 1.6 6 Pieces	mini2SKY laboratory screw M 1.6 brown 10 Pieces	SKY fast & fixed / uni.cone screw M 1.4 for prosthetic coping 6 Pieces	SKY fast & fixed / uni.cone laboratory screw M 1.4 grey 10 Pieces	SKY fast & fixed / uni.cone transversal screw Hex 0.9 6 Pieces	SKY screw for bar base DH 4 mm 3 Pieces	SKY locking pin screw channel 10 pieces
quantity	6	10	6	10	6	3	10
Lengths (mm)	4.7	4.7	5.3	5.3	2.5	12.5	14
Material	titanium grade 5	titanium grade 5	titanium grade 5	titanium grade 5	titanium grade 5	titanium grade 4 KV	POM
titanium anodised	green		blue				
Thread	M 1.6	M 1.6	M 1.4	M 1.4	M 2x0.25	M 1.8	
Head diameter (mm)	2.2	2.2	2.05	2.2		2.4	
suitable for Allen 0.9					yes		
SKY prosthetic key	yes	yes	yes	yes	no	yes	
autoclavable 134°C	yes	yes	yes	yes	yes	yes	

Overview



overview of scan bodies

REF	COPASC12	SKYUSC11	SKYFSCIE	SKYUSCIE
Name	copaSKY scan abutment 12 1 Piece	SKY scan abutment 11 1 Piece	SKY fast & fixed scan cap intraoral / extraoral incl. screw 1 Assortment	SKY uni.cone scan cap intraoral / extraoral incl. screw 1 Assortment
quantity	1	1	1	1
Screw COPASM16	incl.			
SKY-PS22 screw		incl.		
SKYFFSPK screw			incl.	incl.
Body height (mm)	11,5	11,5	8	8
Diameter(mm)	4,5			
Material	titanium grade 4 KV	titanium grade 4 KV	PEEK-Classic™	PEEK-Classic™
Torque (Ncm)	10	10	10	10
Note	surface optimized for scanning	surface optimized for scanning		
copaSKY ultrashort	yes			
copaSKY 3.0	yes			
copaSKY standard	yes			
blueSKY/SKY classic		yes		
narrowSKY		yes		
SKY prosthetic key	yes	yes	yes	yes
autoclavable 134°C	yes	yes	yes	yes



overview of prefabs

REF	COPPFTST	COPEPMST	SKYPFTST	SKYEPFST
Name	copaSKY prefab titanium set 1 set	BioHPP copaSKY elegance prefab set CSK set 1 piece	SKY prefab titanium set 1 set	BioHPP SKY elegance prefab Set SK35 Set 1 Piece
quantity	1	1	1	1
Screw COPASM16	incl.	incl.		
SKY-PS22 screw			incl.	incl.
Body height (mm)	20	16	20	16
Shoulder diameter (mm)		3.6		
Material	titanium grade 4 KV		titanium grade 4 KV	
Body Material		BioHPP		BioHPP
Base material		titanium grade 4 KV		titanium grade 4 KV
titanium anodised		magenta		red-gold
Torque (Ncm)	30	30	25	25
Note	gingiva height min. 1 mm	gingiva height min. 1.5 mm	gingiva height min. 1 mm	gingiva height min. 0.4 mm
copaSKY ultrashort	yes	yes		
copaSKY 3.0	yes	yes		
copaSKY standard	yes	yes		
blueSKY/SKY classic			yes	yes
narrowSKY			yes	yes
SKY prosthetic key	yes	yes	yes	yes

Technical data

Materials

Titanium

	C (%)	Al (%)	V (%)	Y (%)	Fe (%)	O (%)	N (%)	H (%)	Ti (%)	tensile strength (MPa)	elastic limit (%)
titanium grade 4 KV	max 0.08				max 0.5	max 0.4	max 0.05	max 0.0125	balance	800-900	≥ 10
titanium grade 5	max 0.08	5.5-6.5	3.5-4.5	max 0.005	max 0.25	max 0.13	max 0.05	max 0.012	balance	≥ 900	≥ 10

Zirconia

	ZrO ₂ +HfO ₂ +Y ₂ O ₃ (%)	Y ₂ O ₃ (%)	HfO ₂ (%)	Al ₂ O ₃ (%)	SiO ₂ (%)	Fe ₂ O ₃ (%)	Na ₂ O (%)
zirconia	≥ 99	4.5-5.4	< 5	< 0.5	< 0.5	< 0.5	< 0.5

Stainless Steel

	C (%)	Si (%)	Mn (%)	P (%)	S (%)	Cr (%)	Mo (%)	Ni (%)	Cu (%)	N (%)	V (%)	Fe (%)
stainless steel (1.4021)	0.16	max 1.0	max 1.0	max 0.04	max 0.03	12.0-14.0		max 1.0				balance
stainless steel (1.4035)	0.43-0.50	max 1.0	max 1.0	max 0.04	0.15-0.35	12.5-14.0	0.4-0.6	max 0.5				balance
stainless steel (1.4108)	0.28-0.34	0.30-0.80	0.30-0.60	max 0.02	max 0.01	14.5-16.0	0.95-1.1	max 0.3		0.35-0.44		balance
stainless steel (1.4112)	0.85-0.95	max 1.0	max 1.0	max 0.04	max 0.03	17.0-19.0	0.9-1.3				0.07-0.12	balance
stainless steel (1.4123)	0.37-0.45	max 0.6	max 0.6	max 0.2	max 0.005	15.0-16.0	1.5-1.9	max 0.5		0.16-0.25	0.2-0.4	balance
stainless steel (1.4197)	0.2-0.26	max 1.0	max 2.0	max 0.04	0.15-0.27	12.5-14.0	1.1-1.5	0.75-1.5				balance
stainless steel (1.4305)	max. 0.1	max. 1.0	max. 2.0	max. 0.045	0.15-0.35	17.0-19.0	max. 0.7	max. 8.0-10.0	max 1.0	max. 0.11		balance

Precious Metal

	Au (%)	Ag (%)	Cu (%)	Pd (%)	Pt (%)	Zn (%)	Ir (%)
Ceramicor	60			20	19		1
Elitor®	68.6	11.85	10.6	3.9	2.45	2.5	0.05

BioHPP

	inorganic filler (%)	PEEK (Polyetherketone) (%)
BioHPP	≈20	≈80

Plastics

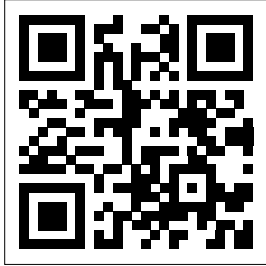
	content
HPP	Polyamid 12 with 30% glass balls
FPM	FPM
PEEK Classic™	Polyetheretherketone
PE	Polyethylene
POM	Polyoxymethylene
Denture silicone	addition cross-linking high performance silicone
PSU	Polysulfone
PVC	Polyvinylchloride
PMMA	Polymethylmetacrylat



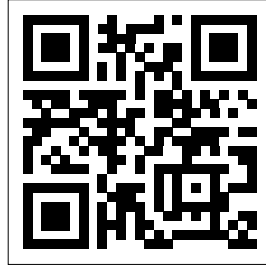
<https://ifu.bredent-group.com/>

Simple download of instructions for use using a standard PC or mobile device and Adobe Acrobat Reader software. Free of charge at: <https://get.adobe.com/reader/>. A printed version is available from the manufacturer within 7 days (in case of shipment to the EU).

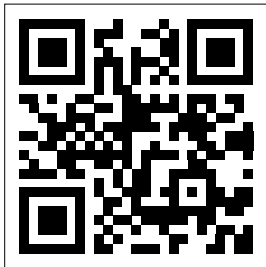
References



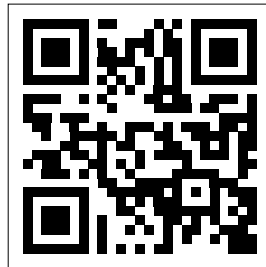
CAD Library



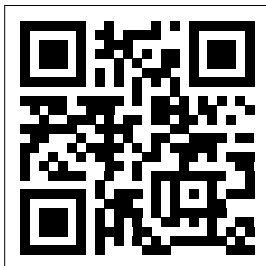
Brochures



Technical product documents



Tools Try-in



RevoCone®

