



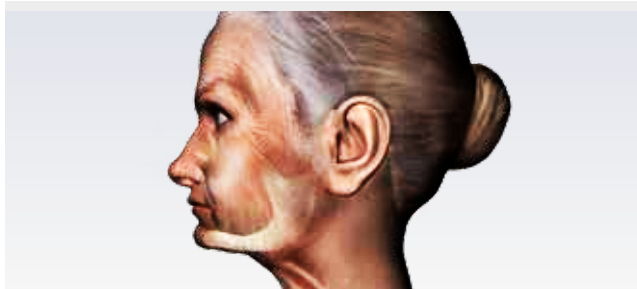
**A dental implant can lend
a new lease of life.**

For a radiant smile.

bredent group

The consequences of tooth loss

Conventional dentures



Implant restoration



Increasing age, accidents, smoking, caries or periodontitis... Life leaves its mark – especially on our teeth.

Teeth can be lost at any stage of life, whether as a young person or in later years of life. In the event of tooth loss, the body breaks down the jaw bone.

Conventional dentures are bridges in which the adjacent teeth have to be ground down, or prostheses fitted, if there are no more teeth. Tooth implants are the best way to correct the loss of individual teeth or treat a toothless jaw.

Functional loading with an implant preserves the jaw bone and gums. This cheek stabilisation makes people look younger. For more than six decades, implants have been a modern and safe solution to counteract bone loss and improve quality of life through beautiful smiles.

Why breident medical implants?



There are many dental implant manufacturers on the market for your dentist to choose between. Numerous manufacturers are tempting to make themselves stand out, with their affordable dental implants. However, quality suffers as a result.

SKY and copaSKY implants from breident medical are manufactured in Germany, quality-tested and a safe choice for dentists and patients. Your expectations and satisfaction are important to us. It is therefore of great importance to us that our products meet the German quality standard, to offer our patients the best. If an implant is lost, you will receive a new one free of charge. Improve your quality of life and find an individual solution together with your dentist. For a beautiful smile, full of joy!



Marianne, 62 years
Immenstaad on Lake Constance

A new lease of life...

"I love showing off my teeth!

I couldn't say that a few weeks ago.

*Together with my dentist, I found the best
solution for my teeth.*

*I received a crown directly on my implants
and was able to leave the practice
immediately after surgery without any
gaps.*

*Now I can enjoy my time with my family
again. This has greatly improved my
quality of life!"*

A beautiful smile in just a few steps

Consultancy services



Dental implants may differ in material and size. Which implants are best for you depends on your bone structure, soft tissue, health status and lifestyle. Ask your dentist or surgeon for advice

on fixed restorations so you can eat and laugh carefree.

Insertion



In many cases, our implants can be supplied immediately, which means that you will receive a temporary crown or bridge on the same day. These are fixed with the implant according to the procedure best suited to you.

Pre-treatment



Your pre-treatment also begins with the usual necessary preliminary examinations which form the basis for planning the implantological restoration.

Fixed restoration



After approximately two to three months (healing time may vary), the temporary restoration is removed and the final restoration is applied.

Implantation



With our state-of-the-art implants with self-tapping threads, it is in many cases possible to place the implant during extraction, so that only one surgical intervention is necessary. In other cases,

the implant is placed in a further procedure. In both situations, the procedure is as gentle as possible and minimally invasive.

Follow-up



Regular checks by the dentist, professional dental cleaning and good oral hygiene contribute to the long-term preservation of the implants.



What you gain at a glance



Health begins in the mouth – you act preventatively against concomitant diseases of tooth loss. Oral health affects general health. Tooth loss is related to, among other things, dementia and cardiovascular diseases. ¹



No more hide-and-peek – feel relaxed and self-confident among family and friends. Shine brightly again in your social environment and in the workplace with fixed teeth.




Benefit from your “new” positive appearance by preventing external changes due to bone loss. Healthier and younger look by supporting the lip and cheek areas.



Improved chewing physiology - Retain your natural jaw bone mobility into old age. This allows you to take part in the culinary joys of life without restricting your enjoyment of food.

¹ Dörfer, C., Benz, C., Aida, J., & Campard, G. (2017). *The relationship of oral health with general health and NCDs: a brief review. International dental journal, 67, 14-18.*



*Frequently
asked
questions
(FAQs)*

?

When will you be able to return to everyday life?

By using fixed temporary restorations immediately, you can continue your normal life without restrictions. However, you should only eat soft food in the first few weeks.

?

How quickly do implants heal?

Inserted implants heal after two to four months.

?

Will I have pain?

Depending on the size of the procedure, different anaesthesia options are available. The practitioner will discuss the best way for you. Slight swelling may occur after treatment, which may cause some pain when cleaning the teeth.

?

Do implants look natural?

Implants are screwed into the jaw bone and are not visible from the outside. The temporary implant that is screwed onto the implant looks similar to the rest of your teeth. The final, fixed restoration is indistinguishable from your real teeth.

?

How long does an implant last?

Our modern implants typically last a lifetime. However, the prosthetic restoration is subject to wear and tear, meaning that it may need to be replaced after a few years. Professional tooth cleaning and good oral hygiene contribute to the long-term preservation of the implants.



SCAN ME!



bredent medical GmbH & Co. KG
Weissenhorner Str. 2 · 89250 Senden
Germany

T: +49 7309 872-440

F: +49 7309 872-444

www.bredent-implants.com

info-medical@bredent.com



REF 000421GB-20240628

Mistake and subject to change reserved

bredent group